

## REGISTERED NURSE - CRITICAL CARE NURSING PROGRAM (ONLINE) (POSTGRADUATE) (S422)

<b>PROGRAM NAME</b>	Registered Nurse – Critical Care Nursing
<b>COURSE CODE</b>	S422
<b>SCHOOL</b>	Sally Horsfall Eaton School of Nursing
<b>CENTRE</b>	Health Sciences
<b>LOCATION</b>	Waterfront / Online Learning Environment
<b>DURATION</b>	8 months
<b>EXPERIENTIAL LEARNING</b>	Clinical Placement
<b>STARTING MONTH</b>	September
<b>CREDENTIAL</b>	Ontario College Graduate Certificate
<b>YEAR OF STUDY</b>	2019-2020
<b>METHOD OF STUDY</b>	FT
<b>APPLY TO</b>	Ontario Colleges <sup>1</sup>

### TUITION

\$2,373.00 \*

### ADDITIONAL COST

\* Amounts listed are the total of tuition, materials, student service and ancillary fees for **one semester** of the program starting in Fall 2018. Fees are subject to change for programs starting in Fall 2019 and at later dates.

**Registered Nurse – Critical Care Nursing is a postgraduate program delivered online that prepares Registered Nurses to provide competent care to critically ill individuals and their families.**

The combined theory and clinical courses encompass the **Level 1, 2 and 3 Critical Care Standards of Practice** as outlined by the Ontario Ministry of Health and Long-term Care and Critical Care Nursing Standards from Ministry of Training, Colleges and Universities (MTCU).

This program is delivered online over eight months and may be of interest to nurses who require a more flexible learning pace.

- Live classes will be offered twice a week on Collaborate Live, and sessions are recorded for viewing at a later time.
- Clinical practicum will be offered full-time in the Greater Toronto Area (GTA).
- Students progress as a group with weekly modules and interact with classmates through Collaborate Live.
- Faculty are available to students for extra tutorials.

Structured clinical courses provide nurses with a safe learning environment to practice critical care knowledge, skills and judgement in critical care units across the GTA.

Due to the limited number of clinical placements available, this program has a restricted number of seats open to applicants.

### PART TIME STUDY OPTIONS

This program is not available on a part-time basis.

### EXPERIENTIAL LEARNING

Clinical Placement

### YOUR FIELD STUDY OPTIONS

Clinical placement is a key component of this program.

Placements are conducted with a partner hospital in their critical care unit. Students will be expected to spend 232 hours in a critical care environment under the supervision of a preceptor and a clinical educator as a requirement to complete the program.

### PROGRAM STANDARDS AND LEARNING OUTCOMES

The graduate has reliably demonstrated the ability to:

1. Practice within the scope of professional, legal and ethical standards, organization policies and best practices in critical care nursing.
2. Establish and maintain therapeutic relationships with patients, families and/or substitute decision makers to optimize patient and family-centred critical care.
3. Assess, analyze and monitor data for patients with complex, multi-system problems in order to anticipate early deterioration in patient's condition, establish priorities and to plan interventions.
4. Plan, implement, evaluate and document specialized nursing interventions to achieve optimal patient outcomes in potential or actual life threatening illness and end-of-life situations.
5. Advocate for and deliver patient and family-centred care to patients/families experiencing potential or actual life threatening illness and end-of-life situations.
6. Collaborate with members of the inter-professional health care team in providing care for patients experiencing potential or actual life threatening illness and end-of-life situations to achieve continuity of care and optimal patient outcomes.
7. Use evidence-based research and best practice guidelines to inform and adapt critical care nursing practice.

8. Use strategies and available resources to respond to environmental, physical and psychosocial stressors affecting self and others in the critical care setting.
9. Engage in reflective practice and ongoing professional development to enhance competence in critical care nursing.

## REQUIRED COURSES

Code	Course Name
NURS4065	Critical Care Nursing - Theory and Labs
NURS4062	Critical Care Nursing - General Practicum
NURS4063	Critical Care Nursing - Advanced Theory
NURS4064	Critical Care Nursing - Advanced Practical

Note: Due to ongoing program improvements, courses are subject to change without notice.

## YOUR CAREER

Graduates of the Registered Nurse – Critical Care Nursing program are prepared to work in a variety of critical care units including:

- medical-surgical
- neuro-surgical
- trauma
- coronary
- cardiovascular

Many hospitals have chosen our program (through sponsorship) to prepare their nurses for working in this dynamic specialty field. As a result of the current shortage of critical care nurses in Ontario, employment opportunities continue to expand.

**As a result of the current shortage of critical care nurses in Ontario, employment opportunities remain strong\*.**

\*Source: Critical Care Workforce Profile, Provincial Report May 2017.pdf<sup>2</sup>

## FUTURE STUDY OPTIONS

See [georgebrown.ca/transferguide](http://georgebrown.ca/transferguide)

## ADMISSION REQUIREMENTS

- **RN**, Certificate of Competence, College of Nurses of Ontario **without practice restrictions**
- BCLS (Heart and Stroke Foundation), HCP Level
- Interview - All applicants are interviewed by telephone or in person.
- Resumé
- One year of acute care nursing experience in Ontario

If taking this program as a non-sponsored student (independent student), students must meet all the mandatory pre-placement health requirements for this program.

**This program is open to domestic applicants only.**

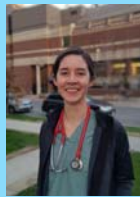
## COURSE EXEMPTIONS

Not applicable

## SPECIAL REQUIREMENTS

### PRE-PLACEMENT HEALTH FORM

- Upon confirmation of acceptance into this program, students must meet all the mandatory pre-placement health requirements for the program. It may take up to four months to complete all the requirements.
- All costs, service fees and fines associated with the overall health requirements are the responsibility of the student.
- For further details and to download the mandatory pre-placement health form, go to the Pre-placement website at [georgebrown.ca/preplacement](http://georgebrown.ca/preplacement)
- Students must submit proof of a satisfactory medical examination before entering field placement. Students who are unable to provide a clear medical examination result to the college will not be able to start their field placement and therefore will be unable to complete the program.



"The critical care course has forever changed how I practice as a nurse. I went from task oriented nursing to being able to understand the whole clinical picture. The clinical placements helped me consolidate the theory I learned and challenged my thinking in ways it has never been challenged before."

**Natalia Escalante, RN, BScN** (Graduate 2018, Registered Nurse – Critical Care Nursing)

"I found that the Critical Care Nursing program including the teachers, placements, and tutorials were pivotal in achieving success in my new workplace. The in-class teaching was interactive and supportive, and our clinical experience was challenging and rewarding, which ultimately led to confidence in my practice. Thanks George Brown!"

**Blaire McDonald, RN, BScN** (Graduate 2018, Registered Nurse – Critical Care Nursing)

## CONTACT US

For more information on this program, please contact:

**Anisa Khan**  
416-415-5000, ext. 2860  
[akhan@georgebrown.ca](mailto:akhan@georgebrown.ca)  
or

**Colleen Alleyne**  
416-415-5000, ext. 5824  
[calleynes3@georgebrown.ca](mailto:calleynes3@georgebrown.ca)

For general information about George Brown College, call the Contact Centre at 416-415-2000 (TTY 1-877-515-5559) or long distance 1-800-265-2002.

## LINKS REFERENCE

<sup>1</sup><https://collegeapply.ontariocolleges.ca/?collegeCode=GBTC&programCode=S422&lang=en>

<sup>2</sup><https://www.criticalcareontario.ca/EN/Critical%20Care%20Nursing/Critical%20Care%20Workforce%20Profile,%20Provincial%20Report%20May%202017.pdf>

*George Brown College is continually striving to improve its programs and their delivery. The information contained in this calendar is subject to change without notice. It should not be viewed as a representation, offer or warranty. Students are responsible for verifying George Brown College admission, graduation, and fee requirements as well as any requirements of outside institutions, industry associations, or other bodies that may award additional designations concurrently with, or after completion of, a George Brown College program.*