



2019 – 2020

ENGLISH FOR ACADEMIC PURPOSES

georgebrown.ca/international/esl

 Study in Toronto, Canada

“George Brown was one of the best roads in my life-map. Through the EAP program I got volunteering experience in the community to support my future career.”

Tri Nhan (Jimmy) Nguyen
ESL Level 8 – 2017

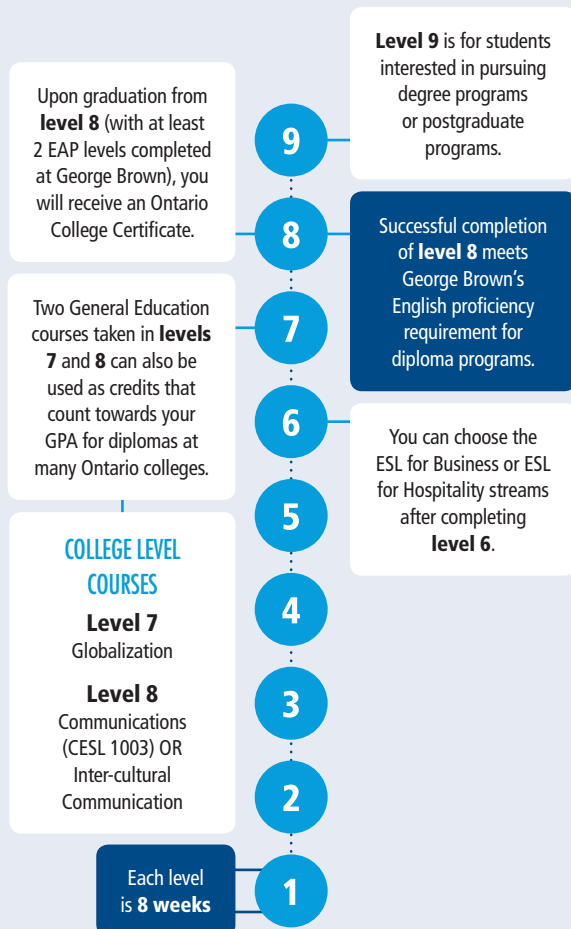
George Brown College’s full-time English for Academic Purposes (EAP) program gives you the skills you need to be successful in Canada. Learn or improve your English in an environment that is focused on your future academic and career success.

- Interactive classroom technology
- Expert academic instructors
- Relevant, refined curriculum
- Supportive learning environment
- Great downtown location
- Vibrant student life
- Volunteering Opportunities
- Free conversation groups

*NOTE: The EAP program runs from **9am – 5pm** daily and students are assigned to either a **morning (9am – 1pm)** schedule or an **afternoon (1pm – 5pm)** schedule, and not both. By registering for the EAP program, students will be expected to attend the schedule to which they are assigned, and schedule change requests will not be able to be accommodated.

EAP TO POST-SECONDARY PATHWAY

George Brown’s EAP (ESL) program is a full-time program divided into 9 levels of 8 weeks each. Your language skills are assessed when you arrive, or at the time of admissions based on a TOEFL/ IELTS score, and you are placed in the level that is right for you.



EAP DATES

Academic Year: 2018 – 2019

Placement Test	Start Date	End Date
Aug. 28, 2018	Sept. 4, 2018	Oct. 26, 2018
Oct. 23, 2018	Oct. 29, 2018	Dec. 21, 2018
Jan. 3, 2019	Jan. 7, 2019	March 1, 2019
Feb. 26, 2019	March 4, 2019	Apr. 26, 2019
Apr. 30, 2019	May 6, 2019	June 28, 2019
June 25, 2019	July 2, 2019	Aug. 23, 2019

Academic Year: 2019 – 2020

Placement Test	Start Date	End Date
Aug. 27, 2019	Sept. 3, 2019	Oct. 25, 2019
Oct. 22, 2019	Oct. 28, 2019	Dec. 20, 2019
Jan. 2, 2020	Jan. 6, 2020	Feb. 28, 2020
Feb. 25, 2020	March 2, 2020	Apr. 24, 2020
Apr. 28, 2020	May 4, 2020	June 26, 2020
June 23, 2020	June 29, 2020	Aug. 21, 2020

FEES AND RELATED COSTS (2019/20)

(Subject to change for 2019/20)

Tuition Fees	\$2,825.00 (per 8 week session)
Additional fees for materials, Student Association, etc.	\$210.32 (per 8 week session)
One time fees for first session (Student ID, Alumni)	\$40.46 (one time, 1 st session)
Health Insurance	\$78.22 (per 8 week session)
TOTAL (new international ESL student)	\$3,154.00

CONDITIONAL ADMISSION THROUGH GEORGE BROWN'S EAP PROGRAM

Applicants from eligible countries who do not meet George Brown's English language requirements may be offered conditional admission to a post-secondary program through George Brown's EAP (English for Academic Purposes) program.

In all cases final admission will be subject to diploma/degree/postgraduate program availability at the time of completion of EAP requirements.

TIMETABLE

Time Morning Session	Time Afternoon Session	Monday		Tuesday	Wednesday	Thursday	Friday
		Levels 1 – 6	Levels 7 – 9*	Levels 1 – 9	Levels 1 – 9	Levels 1 – 9	Levels 1 – 9
9:00 – 9:50	1:00 – 1:50	Specialized Class	GBC College Credit Course Or College Level Independent Learning	Core Class	Core Class	Core Class	Core Class
9:50 – 10:40	1:50 – 2:40	Specialized Class		Core Class	Core Class	Core Class	Core Class
10:40 – 11:20	2:40 – 3:20	Break	Break	Break	Break	Break	Break
11:20 – 12:10	3:20 – 4:10	Specialized Class	GBC College Credit Course Or College Level Independent Learning	Core Class	Core Class	Core Class	Core Class
12:10 – 1:00	4:10 – 5:00	Specialized Class		Core Class	Core Class	Core Class	Core Class
English In Practice Workshops – Sign Up At: WWW.GBCESL.COM							
1:30 – 3:30	10:30 – 12:30	Workshops		Workshops	Workshops	Workshops	Workshops

***Level 7** students have the option to attend a General Education credit course. Space is limited.

***Level 8** students have the option to attend a General Education credit course or Skills for College English courses. Space is limited.

***Level 9** students work independently on Mondays.

Core Class (Levels 1 – 8): 2 hours/week online.

Core Class: This class is where students learn the key skills to improve their academic English.

General Education (Levels 7 – 8): 2 hours/week online.

Specialized Class: This class focuses on specific skills, usually pronunciation, fluency and speaking skills.

TESTING AND PLACEMENT

EAP offers full-time English instruction through 9 levels, each 8 weeks long. Applicants who have written the TOEFL or IELTS tests (Academic) can enter directly into an EAP level based on their test score (within two years). Students who have not written either test will need to write a placement test in Toronto the week before the program starts to determine their starting level.

EAP STARTING LEVEL*	IELTS: ENTRY requirements		TOEFL: ENTRY requirements		
	Overall	Writing & Speaking	Overall	Speaking	Writing
9	6	6.5	80 – 91	22	22
8	5.5	6	62 – 79	20	20
7	5.5	5.5	50 – 61	18	18
6	5.0	5	40 – 49	15	14
5	4.0 – 4.5	4.5	31 – 39	13	12
4	3.5	4	26 – 30	11	8
3	3	3.5	19 – 25	8	6
2	2.5	3	10 – 18	5	4
1	2.5	2.5	0 – 9	2.5	2.5

*You will be placed in the EAP starting level that corresponds to your lowest score. The information in the table above is subject to periodic review. Please check our website for the most up-to-date version.

georgebrown.ca/international/esl/admissions



For students interested in taking the IELTS test in Toronto, the George Brown College Official IELTS Test Centre provides a complete IELTS Testing service. For more information, please visit: georgebrown.ca/ielts

To apply for the English for Academic Purposes program at George Brown College please visit applynow.georgebrown.ca

For more information, contact the International Centre

200 King Street East (Main Floor), Toronto, Ontario, Canada M5A 3W8

Phone: 416-415-5000 ext. 2115

Submit an Inquiry at georgebrown.ca/internationalinquiry
esl@georgebrown.ca

To learn more visit georgebrown.ca/international/esl



[/georgebrowninternational](https://www.facebook.com/georgebrowninternational)
[/gbc.esl](https://www.facebook.com/gbc.esl)



30% Post-Consumer Waste