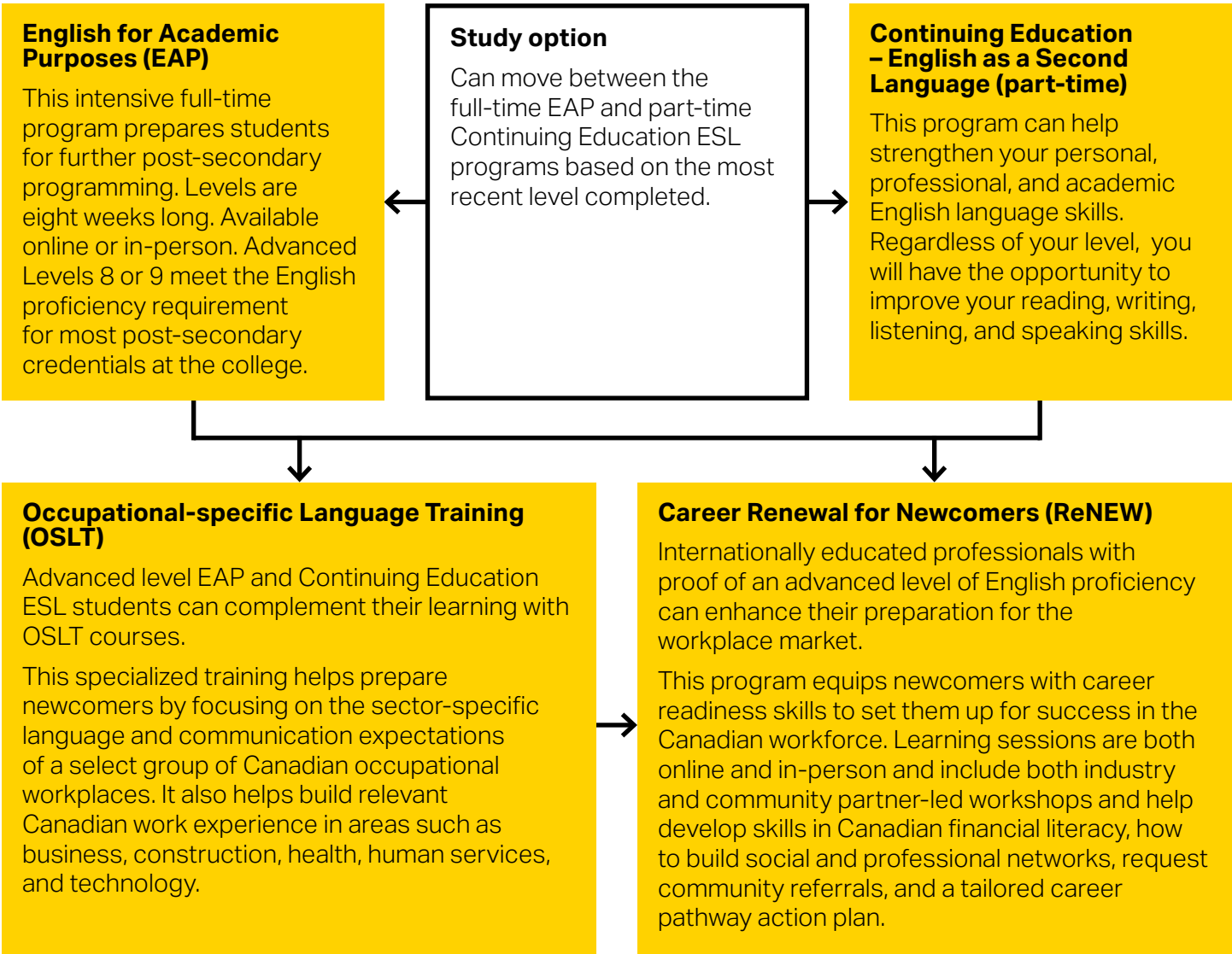






School of English as a Second Language (ESL) — Pathways



Program	EAP	ConEd ESL	OSLT	ReNEW
Accepted results for entry to the program	<ul style="list-style-type: none"> • IELTS (academic) • TOEFL (iBT) • Duolingo • EAP placement test • ConEd ESL level completion 	<ul style="list-style-type: none"> • IELTS (academic) • TOEFL (iBT) • Continuing Education ESL placement test • EAP level completion 	<ul style="list-style-type: none"> • CLB 	<ul style="list-style-type: none"> • CLB • IELTS (academic) • TOEFL (iBT) • EAP level completion • ConEd ESL level completion
Duration	<ul style="list-style-type: none"> • Eight weeks per course 	<ul style="list-style-type: none"> • 6-12 weeks depending on the course (ranging from 40-50 hours) 	<ul style="list-style-type: none"> • 8-10 weeks for 40-hour courses • 10-18 weeks for 140- and 180-hour courses 	<ul style="list-style-type: none"> • 10-week program (145 hours)
Delivery options	<ul style="list-style-type: none"> • Online • In-person 	<ul style="list-style-type: none"> • Online • In-person • Hybrid (both in-person and online) 	<ul style="list-style-type: none"> • Online • Hybrid (both in-person and online) 	<ul style="list-style-type: none"> • Hybrid (both in-person and online)
Learn more	 georgebrown.ca/eap	 georgebrown.ca/part-time-esl	 georgebrown.ca/oslt	 georgebrown.ca/renew

Note: Refer to the college website for the most current info about start dates, timetable and schedules, tuition fees, financial aid and scholarship, and other program details as they are subject to change at any time.



Contact us

esl@georgebrown.ca



Scan the QR code to learn more about all the School of ESL program options.

georgebrown.ca/preparatory-liberal-studies/english-as-a-second-language-esl

This project received support from ONCAT (Ontario Council on Articulation and Transfer).