

The logo for 'evolvED' features the word in a multi-colored font (green, yellow, blue, purple, orange) with two orange arrows pointing right. The background of the slide is dark teal with abstract white and light blue line art patterns.

Integrating AI-Supported Research Practices and Collaborative Learning into Art Education

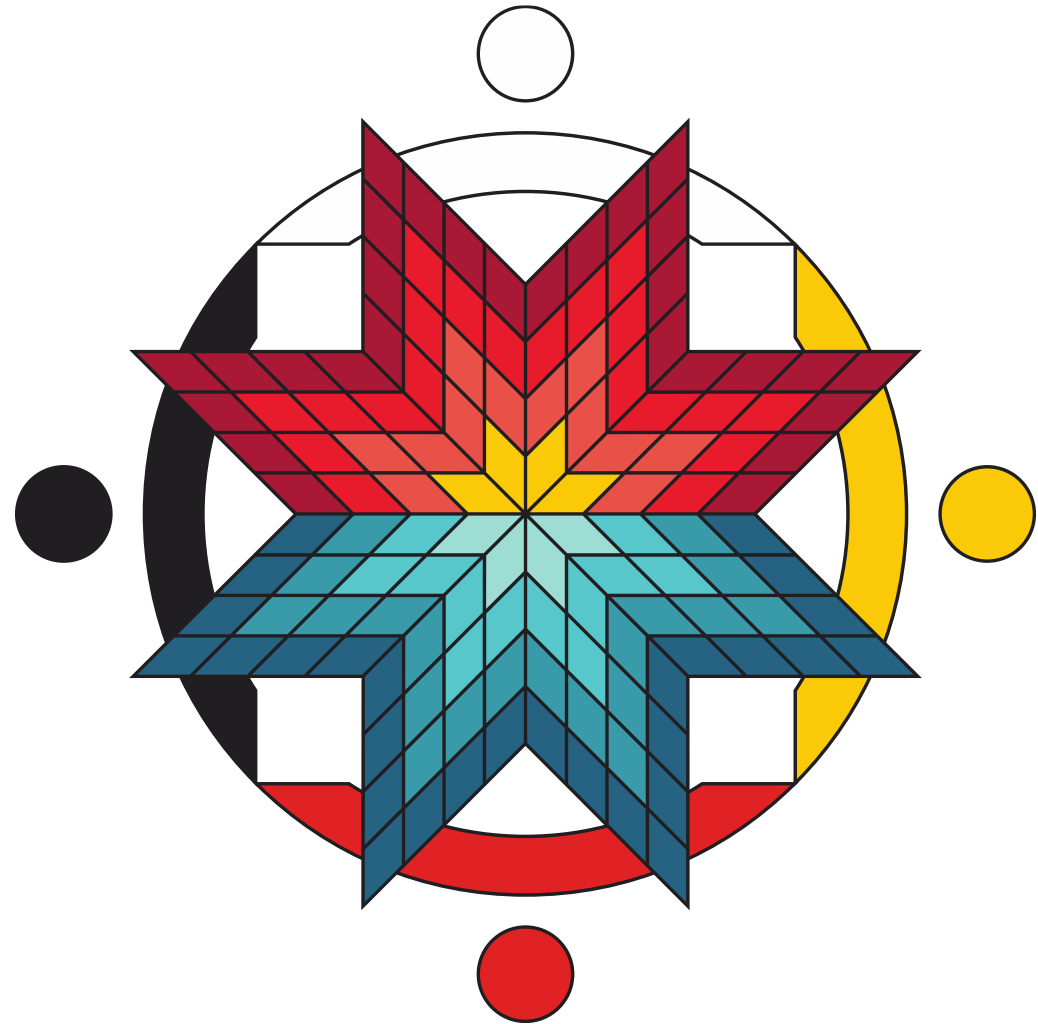
Dr. Bahar Mousavi Hejazi (she/ her)
Professor & Academic Coordinator
Art & Design Foundation Program
School of Design/ George Brown Polytechnic

Land Acknowledgement

George Brown Polytechnic is located on the traditional territory of the Mississaugas of the Credit First Nation and other Indigenous peoples who have lived here over time.

We are grateful to share this land as treaty people who learn, work and live in the community with each other.

[Learn more about our land acknowledgement.](#)



FROM CRITICAL INQUIRY TO CREATIVE PRODUCTION

Agenda

A journey exploring how research, collaboration, and AI can strengthen creative learning in first-year art education.



COURSE REDESIGN

- Learner-centered
- Inclusive
- Decolonizing
- Ongoing reflection and collaboration



STUDENT CHALLENGE

Connecting research to creative practice



LEARNING JOURNEY

- Research
- Museum Learning
- Creative Production
- Reflection



LIBRARY PARTNERSHIPS

- Research Literacy
- Ethical Practice
- Information Confidence



CHATGPT EDU AS A LEARNING SCAFFOLD

- Inquiry Support
- Collaboration
- Idea Development
- Creative Growth

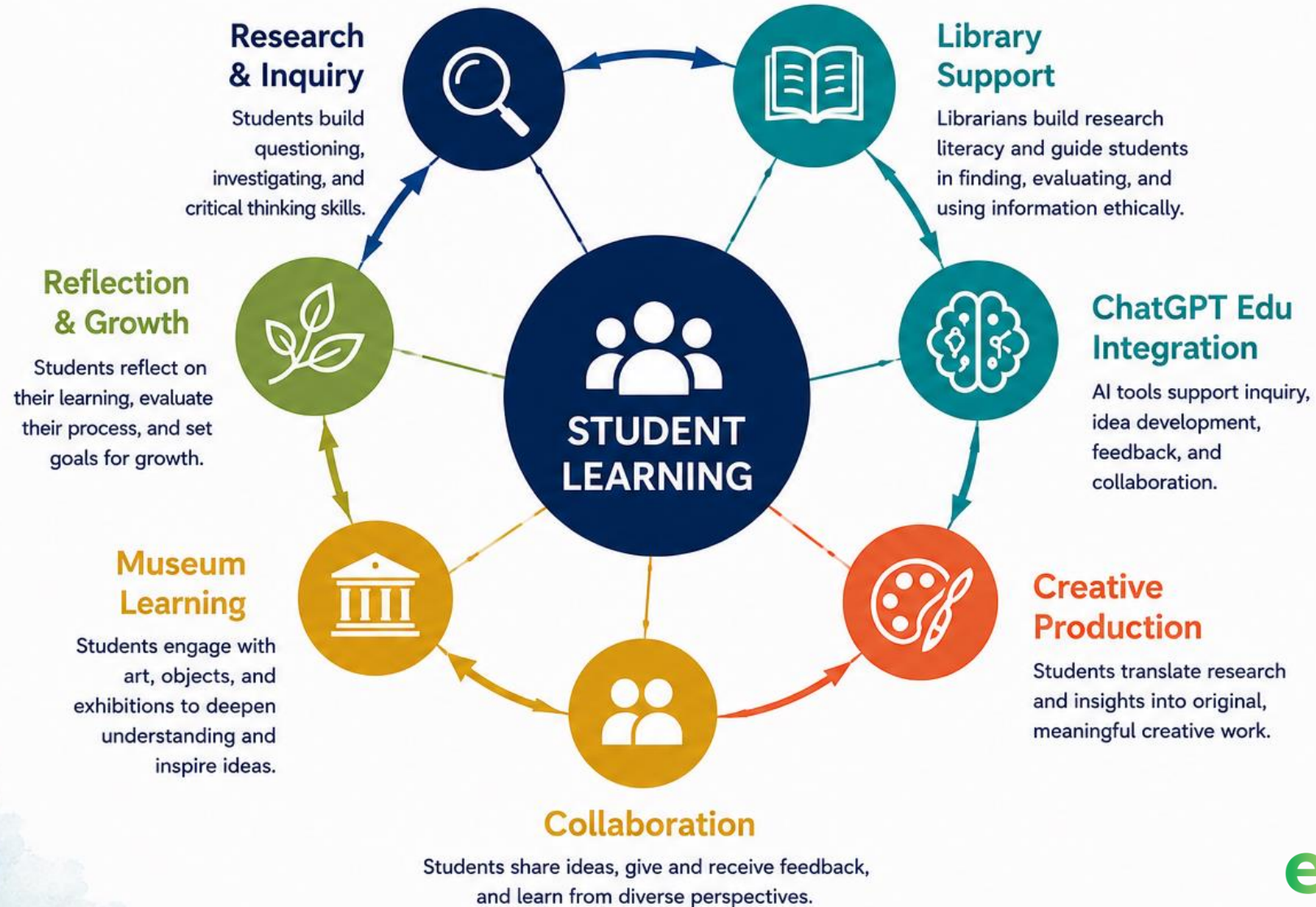


STUDENT IMPACT & DISCUSSION

- Creative Confidence
- Ethical AI Use
- Future Possibilities

1

Research, Collaboration, and AI Can Strengthen Creative Learning



2

First-Year Art Students Need Support Connecting Research to Creative Practice



Research literacy

Struggle to ask focused research questions and find credible information.



Critical concepts & historical context

Difficulty understanding and applying theory and cultural context.



Visual analysis & interpretation

Find it challenging to analyze, interpret, and connect visual evidence.



Collaboration

Need support working together and learning from different perspectives.



Reflection

Uncertain how to reflect on learning and apply it to their creative work.



3

From Critical Inquiry to Creative Production

A Learning Journey That Connects Research, Experience, and Reflection



START WITH INQUIRY

Students begin with a collaborative research assignment focused on critical concepts in the history of art.

- Critical Concepts
- Questioning
- Collaboration
- Research Skills



EXTEND THROUGH MUSEUM LEARNING

Students deepen their understanding through museum-based research and visual observation.

- Museum-Based Research
- Visual Observation
- Historical Context
- Critical Analysis



CREATE WITH PURPOSE

These experiences inform an individual poster project, where students translate research into original creative work.

- Research to Creation
- Creative Decisions
- Original Expression
- Meaningful Connections



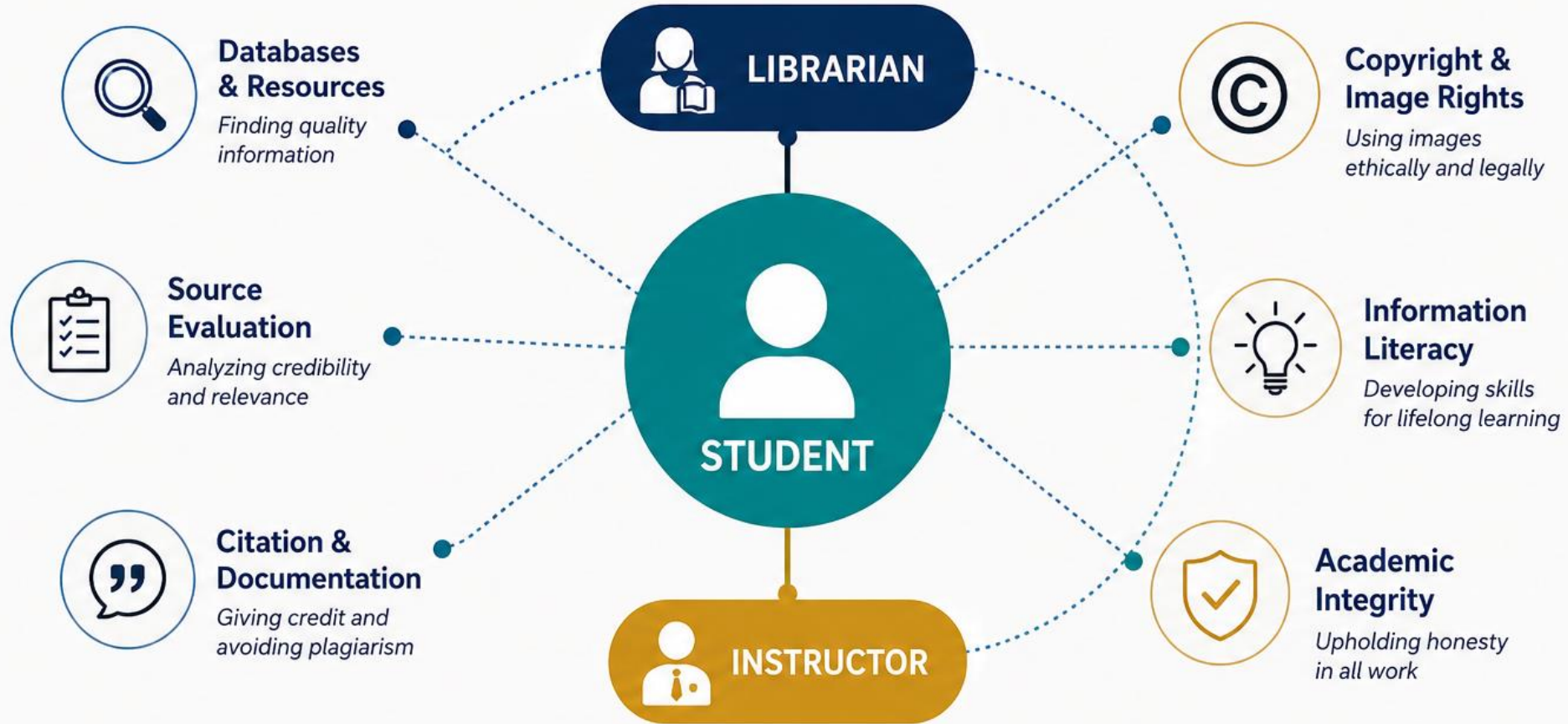
REFLECT AND CONNECT

Students reflect on what they learned, how they learned it, and how they might continue to grow.

- Reflection
- Learning Growth
- Peer Feedback
- Future Goals

4

Library Partnerships Build Research Literacy and Ethical Practice

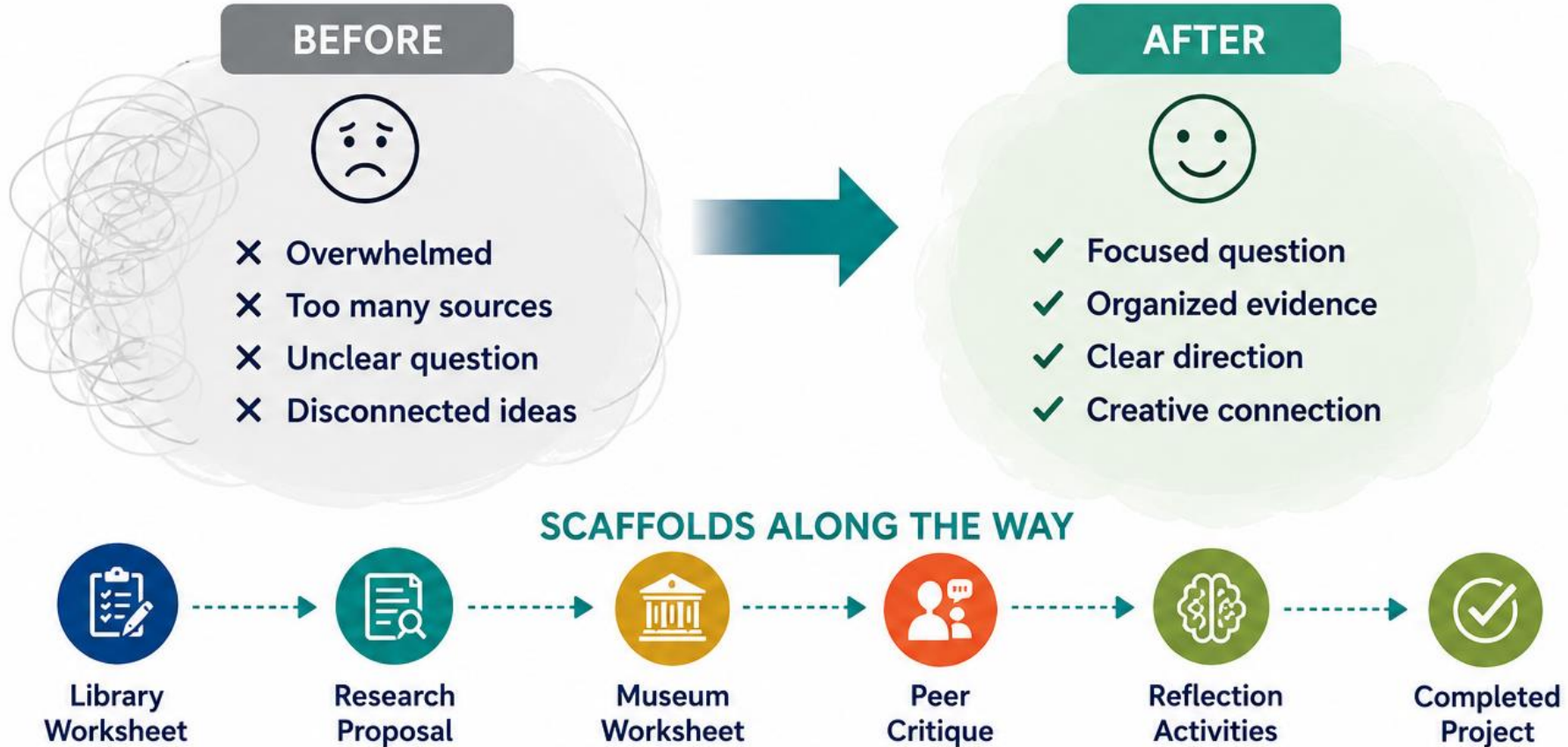


Through collaboration, librarians and instructors empower students to conduct responsible, ethical, and meaningful research.



5

Structured Support Helps Students Navigate the Research Process




Step-by-step support builds confidence, strengthens research skills, and helps students move from confusion to clarity.

6

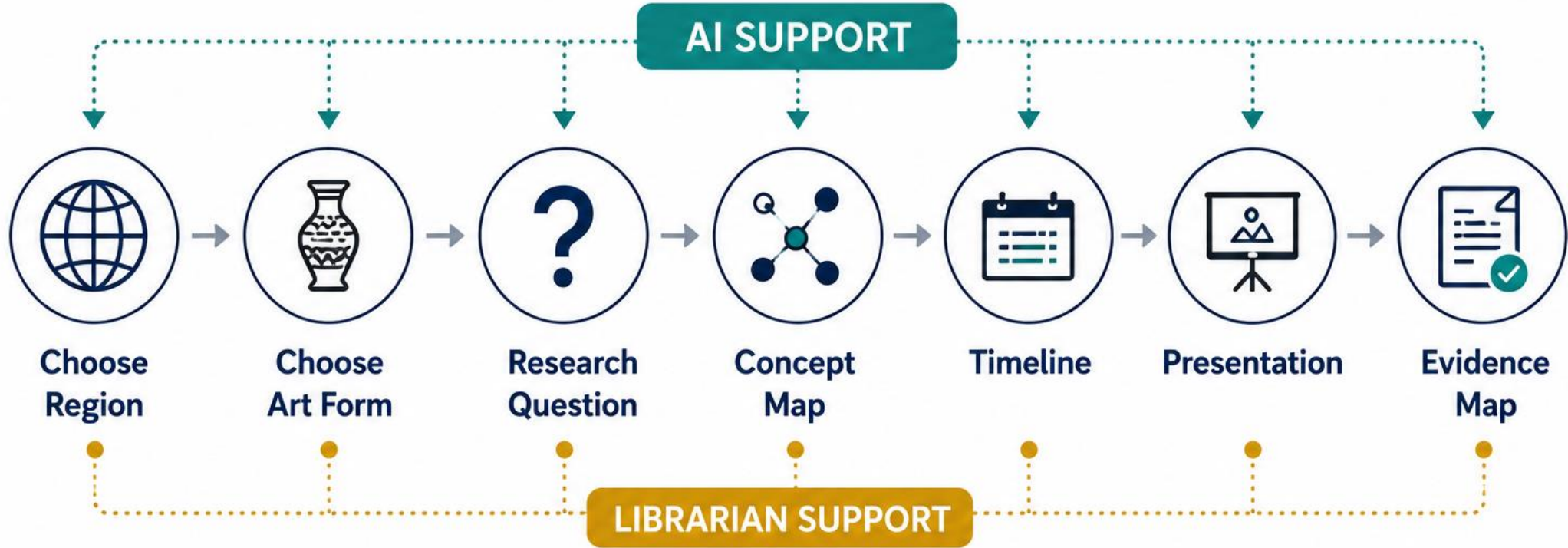
ChatGPT Edu as a Structured Research and Design Companion



 ChatGPT Edu supports student learning by extending research, deepening understanding, and sparking ideas—while students maintain ownership, critical thinking, and academic integrity.

7

AI Can Scaffold Research and Collaborative Learning Workflows



- Verification
- Sources
- Credibility
- Citation



AI tools can help students move step-by-step through the research process, while librarians ensure quality, credibility, and ethical use of information.



8

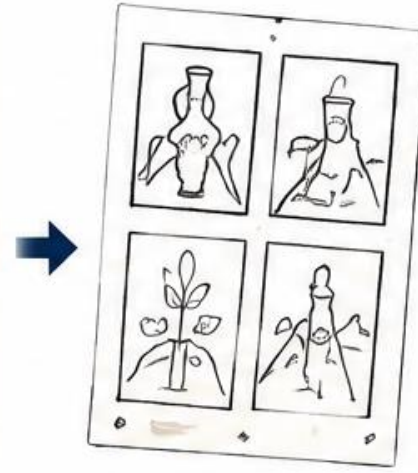
AI Can Help Students Translate Research into Creative Production



Museum Visit



Visual Research



6-9 Thumbnails



3 Rough Concepts



Final Poster



Rationale

AI SUPPORT



Explore Directions



Compare Influences



Generate Options



Refine Ideas



Articulate Rationale

9

Ethical AI Use Requires Transparency, Verification, and Human Judgment



TRANSPARENCY

Document AI use clearly.



VERIFICATION

Check and cite credible sources.



AUTHENTICITY

Student authorship and originality.



INTEGRITY

Responsible and ethical practice.

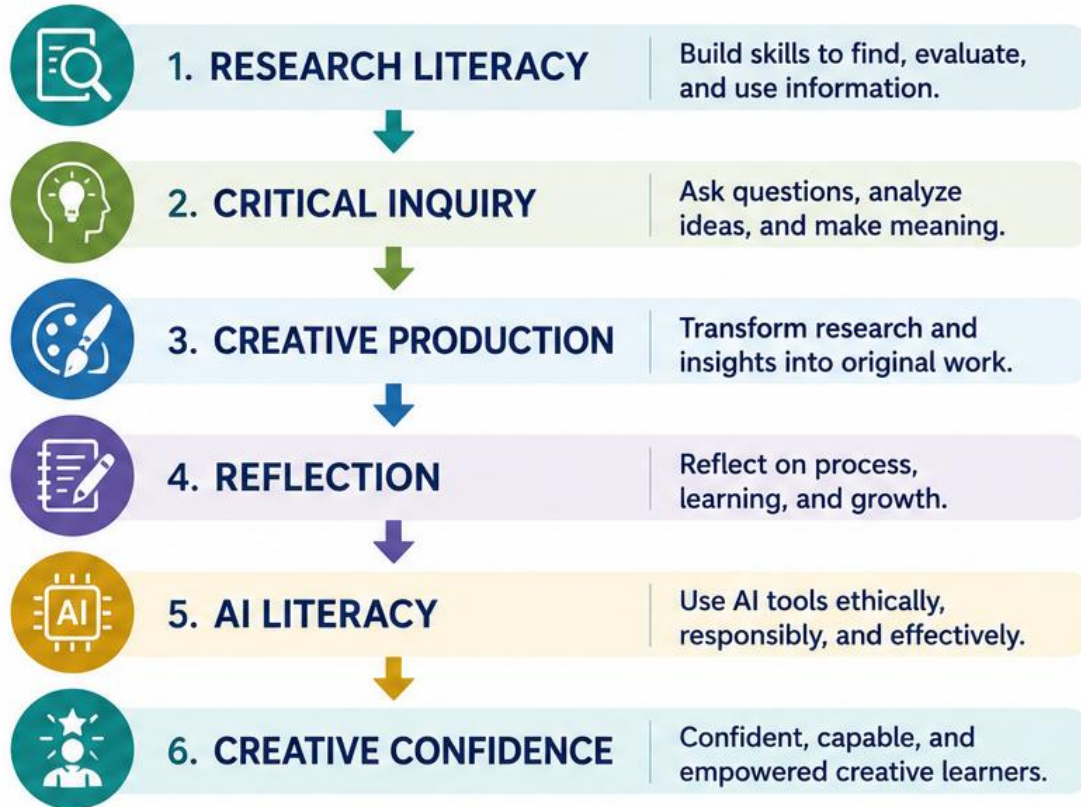


Ethical AI use builds trust, strengthens learning, and prepares students for responsible creativity in a digital world.



From Research Literacy to Creative Confidence

An Integrated Learning Journey for First-Year Art and Design Students



THE BIG PICTURE

When research literacy, critical inquiry, museum learning, creative production, reflection, and ethical AI use work together, students develop the skills, mindset, and confidence to become thoughtful, original, and responsible creative professionals.



EXPECTED IMPACT



STRONGER RESEARCH SKILLS

Students find, evaluate, and use information with confidence.



IMPROVED COLLABORATION

Students work together, share ideas, and learn from one another.



HIGHER QUALITY PRESENTATIONS

Research, analysis, and visuals come together in compelling ways.



MORE ORIGINAL CREATIVE WORK

Students create work grounded in inquiry and personal voice.



ETHICAL AI PRACTICES

Students use AI transparently, responsibly, and with integrity.



Thank You!

Thank you for being part of this conversation about creative learning and educational innovation.



RESEARCH

Ask questions.
Seek understanding.



MUSEUM LEARNING

Connect with art,
contexts, and diverse
perspectives.



CREATIVE PRACTICE

Transform ideas
into original
creative work.



REFLECTION

Think deeply.
Learn continuously.
Create with purpose.



RESPONSIBLE AI USE

Use AI ethically.
Verify, document,
and own your learning.

evolved  

*Students
at the center.
Learning
that empowers.*



“

What are the biggest challenges educators face in integrating AI in their learning-centered teaching, and how can we navigate them together?

”



*Research.
Creativity.
Reflection.
Connection.
Future-ready.*



+

•

○

Acknowledgements & References

Project Foundations

Course Materials: Art Culture Course

Research Assignment: Critical Concepts in History of Art

Poster Art Assignment

Reflection on Learning

Institutional Partners

George Brown Polytechnic Library

School of Design

Generative AI

ChatGPT Edu used for ideation, workflow design, visual prototyping, and presentation development

Presentation Design

Visual diagrams and presentation prototypes developed with AI-assisted design tools and refined by the author.