


2026–2027
Viewbook

georgebrown.ca



GEORGE BROWN

YOUR TOMORROW

GEORGE
BROWN
POLYTECHNIC

Top 3 Reasons to Study at George Brown



Located in downtown Toronto

Well connected to employment opportunities.

Hands-on learning

All of our career-focused programs include at least one experiential learning opportunity.

Job readiness

We prioritize real-world learning and provide students with opportunities to work alongside industry professionals in research and field education opportunities.

200+ Career-Focused Programs

As an accredited member of Polytechnics Canada, we deliver skills training with a purpose. Our students gain practical knowledge in a variety of settings, including workplaces, medical clinics, simulation facilities, institutes, labs, shops, and studios. Automation, artificial intelligence and climate change are just a few of the factors that are transforming the workforce. With new and disruptive technologies developing faster than ever, employers tell us they're looking for a blend of technical and people skills in new hires—people who can problem solve, communicate effectively, and are resilient in the face of change.

georgebrown.ca/programs

Fast Facts



29,819 Full-Time Students



2,456 Part-Time Students



42% International Students from 100+ nationalities



+280,000 Alumni Worldwide



3 Campuses + Student Residence + Additional Spaces



Ranked among Canada's Top Research Colleges



Established in 1967 in Ontario's public college network

2024–2025 academic year.

Program Listing 2026–2027



George Brown Polytechnic offers a wide range of programs and pathways to meet your needs. We continually strive to improve our programs and their delivery. The information contained in this guide is subject to change without notice. It should not be viewed as a representation, offer, or warranty.

Students are responsible for verifying George Brown admission, graduation, and fee requirements, as well as any requirements of outside institutions, industry associations or other bodies that may award additional designations concurrently with, or after completion of, a George Brown program.

Amounts listed are the total of tuition, materials, student service and ancillary fees for the first academic year (Sept 1 to August 31), based on last year's fees (25-26). Your invoice will reflect current year's fees. Estimated fees do not include co-op fees ranging from \$400 to \$600 for programs with a co-op work component.

Applying as a Mature Student

Mature student status is 19 years or older and without an Ontario Secondary School Diploma. Visit georgebrown.ca/mature for details.

English Language Proficiency

All applicants to George Brown Polytechnic must demonstrate an acceptable level of English Language Proficiency. Visit georgebrown.ca/proficiency for details.

International Applicants

Many of our programs are also eligible for international enrolment. Visit georgebrown.ca/intlprograms for more information.

Work-Integrated Learning (WIL)

Students gain experience in a work or professional setting with an employer. This includes co-op, internship, externship, or placement opportunities. Visit georgebrown.ca/wil for details.

Table legend

- CLC – Casa Loma Campus
- FX – Fashion Exchange
- SHS – Sunnybrook Health Sciences Centre
- SJC – St. James Campus
- TMU – Toronto Metropolitan University
- OSSC– Ontario Secondary School Certificate (or equivalent)
- OSSD– Ontario Secondary School Diploma (or equivalent)
- WFC – Waterfront Campus
- WIL – Work-Integrated Learning
- YCPA – Young Centre for the Performing Arts

Faculty of Applied Science, Construction, and Engineering Technology

Angelo DelZotto School of Construction Management

Program	Loc.	Length	Start	Tuition	Admission Requirements	Career Options
Diploma						
T161 Construction Engineering Technician	CLC	2 yrs (4 sems)	Jan, Sept	\$4,057	OSSD with Eng Gr. 12 (C/U); Math Gr. 11 (M/U) or Gr. 12 (C/U)	Construction technician/estimator, construction site/project/construction manager, home builder/general contractor, building and home inspector, construction technical sales agent
Advanced Diploma						
T105 Construction Engineering Technology	CLC	3 yrs (6 sems)	Jan, Sept	\$4,057	OSSD with Eng Gr. 12 (C/U); Math Gr. 11 (M/U) or Gr. 12 (C/U)	Construction manager, construction technologist, estimator, inspector, project coordinator,
T164 Civil Engineering Technology	CLC	3 yrs (6 sems)	Jan, Sept	\$4,058	OSSD with Eng Gr. 12 (C/U); Math Gr. 11 (M/U) or Gr. 12 (C/U)	Structural design assistant, project planner, estimator for civil works, municipal engineering technology/inspector, civil CAD/BIM technician
Degree						
T312 Honours Bachelor of Technology (Construction Management)	CLC	4 yrs	Sept	\$9,618	OSSD with 6 Gr. 12 (U/M) courses min average 65% incl. Eng Gr. 12 (U) min 60%; Math Gr. 12 (U) min 60%. Mature students: please visit program page.	Project coordinator/monitor, site superintendent, building condition assessor/site inspector, construction specialist in building science/claims/quality control/health and safety/project controls, contractor/developer
T314 Honours Bachelor of Technology (Construction Management)	CLC	5 sems	May	\$9,516	3-year adv. diploma in Architectural Technology. Min GPA 3.0	Project coordinator/monitor, site superintendent, building condition assessor/site inspector, construction specialist in building science/claims/quality control/health and safety/project controls, contractor/developer
T316 Honours Bachelor of Technology (Construction Management)	CLC	5 sems	May	\$9,516	3-year adv. diploma in Building Renovation Technology. Min GPA 3.0	Project coordinator/monitor, site superintendent, building condition assessor/site inspector, construction specialist in building science/claims/quality control/health and safety/project controls, contractor/developer
T317 Honours Bachelor of Technology (Construction Management)	CLC	5 sems	May	\$9,516	3-year adv. diploma in Civil Engineering Technology. Min GPA 3.0	Project coordinator/monitor, site superintendent, building condition assessor/site inspector, construction specialist in building science/claims/quality control/health and safety/project controls, contractor/developer
T318 Honours Bachelor of Technology (Construction Management)	CLC	2 yrs (5 sems)	May	\$9,516	3-year advanced diploma in Construction Engineering Technology. Min GPA 3.0	Project coordinator/monitor, site superintendent, building condition assessor/site inspector, construction specialist in building science/claims/quality control/health and safety/project controls, contractor/developer
Postgraduate						
T408 Residential Construction Management	CLC	1 yr (2 sems)	Sept	\$4,027	2- or 3-year diploma in Construction Engineering Technology, Civil Engineering Technology or Building Renovation Technology with min GPA of 2.7. Plus: Department interview and resumé.	Estimator, residential construction manager, residential construction project manager, site superintendent, project coordinator
T412 Building Information Modeling Management	CLC	1 yr (3 sems)	Sept	\$9,640	2- or 3-year diploma or degree in Construction, Civil, Mechanical, Electrical or Landscape Engineering, Architectural Studies, or Interior Design. Plus: Departmental review (resume/interview) required for applicants with 2-year diploma.	BIM modeller, BIM specialist, BIM technologist, BIM analyst, BIM scanning technician
Masters						
T550 Master of Construction Management	WFC	1 year (3 sems)	Sept	\$14,050	4-year (Honours) bachelor's degree in construction management, civil engineering, construction engineering, architecture, interior design, building science or other building related programs; with min GPA of 70% in last 60 credit hours of undergrad study. Note: Applicants who do not meet the academic requirements may be considered based on a combination of academic and industry-specific experience	Project management consultant, senior cost consultant/estimator, owner representative, construction company director, procurement manager, bidding manager, risk manager, claims manager, project advisor, project manager

School of Apprenticeship and Skilled Trades

Program	Loc.	Length	Start	Tuition	Admission Requirements	Career Options
Certificate						
T165 Plumbing Techniques	CLC	1 yr (2 sems)	Jan, May, Sept	\$5,358	OSSD with Eng Gr. 12 (C/U); Math Gr. 11 (M/U) or Gr. 12 (C/U)	Plumber, steamfitter, sprinkler systems installer, gas fitter, sales and distribution
T166 Welding Techniques	CLC	1 yr (2 sems)	May, Sept	\$8,658	OSSD with Eng Gr. 12 (C/U); Math Gr. 11 (M/U) or Gr. 12 (C/U)	Welder apprenticeships, manufacturing, fabrication, automotive sector, heavy equipment production, automation, construction
T167 Electrical Techniques	CLC	1 yr (2 sems)	Jan, May, Sept	\$5,313	OSSD with Eng Gr. 12 (C/U); Math Gr. 11 (M/U) or Gr. 12 (C/U)	Electrical technician, independent contractor, job estimator, project coordinator, electrical designer
T176 Construction Techniques	CLC	1 yr (3 sems)	Jan, Sept	\$6,129	OSSD with Eng Gr. 12 (C/U); Math Gr. 11 (M/U) or Gr. 12 (C/U)	Skilled trades, project management, specialized roles like estimating and surveying
Diploma						
T160 Heating, Refrigeration, and Air Conditioning Technician	CLC	2 yrs (4 sems)	Jan, Sept	\$4,134	OSSD with Eng Gr. 12 (C/U); Math Gr. 11 (M/U) or Gr. 12 (C/U)	Commercial and residential HVAC/R technician, sales, system balancing and cost-estimator
T180 Carpentry and Renovation Technician	CLC	2 yrs (4 sems)	Jan, Sept	\$4,375	OSSD with Eng Gr. 12 (C/U); Math Gr. 11 (M/U) or Gr. 12 (C/U)	Renovation, general contracting, carpentry, site supervision, estimating, technical sales, home inspections
Advanced Diploma						
T148 Building Renovation Technology	CLC	3 yrs (6 sems)	Jan, Sept	\$4,376	OSSD with Eng Gr. 12 (C/U); Math Gr. 11 (M/U) or Gr. 12 (C/U)	Junior estimator, construction renovator technologist, general contractor, construction project manager, technical sales representative
T162 Heating, Refrigeration, and Air Conditioning Technology	CLC	3 yrs (6 sems)	Jan, Sept	\$4,136	OSSD with Eng Gr. 12 (C/U); Math Gr. 11 (M/U) or Gr. 12 (C/U)	Consulting for engineering and architectural firms, design/build contractors, commercial refrigeration installation and maintenance, building automation and control companies, HVAC/R manufacturing, sales and distribution companies, You may also pursue construction or mechanical management, specialty contractor

School of Architectural Studies

Program	Loc.	Length	Start	Tuition	Admission Requirements	Career Options
Diploma						
T132 Architectural Technician	WFC	2 yrs (4 sems)	Jan, Sept	\$4,277	OSSD with Eng Gr. 12 (C/U); Math Gr. 11 (M/U) or Gr. 12 (C/U)	Project coordinator, technical representative for building/equipment suppliers, production of computer-aided technical drawings and modelling, technician with builders/developers, property manager
Advanced Diploma						
T109 Architectural Technology	WFC	3 yrs (6 sems)	Jan, Sept	\$4,277	OSSD with Eng Gr. 12 (C/U); Math Gr. 11 (M/U) or Gr. 12 (C/U)	Architectural technologist/assistant, self-employed designer/contractor, project director/coordinator, municipal plans examiner, architectural document production
T178 Interior Design	WFC	3 yrs (6 sems)	Jan, Sept	\$4,279	OSSD with Eng Gr. 12 (C/U); Math Gr. 11 (M/U) or Gr. 12 (C/U)	Junior interior designer, technologist with builders, architectural and interior design firms, technical representative for building/equipment suppliers, specification writer, design and colour consultant for builders and retail outlets
Degree						
T320 Bachelor of Interior Design (Honours)	WFC	1 yr (3 sems)	May	\$11,255	3-year advanced Diploma in Interior Design. Min GPA 2.7	Junior interior designer, drafts-person/CAD technician, design consultant, material and supplier salesperson, lighting designer

School of Computer Technology

Program	Loc.	Length	Start	Tuition	Admission Requirements	Career Options
Diploma						
<u>T141</u> Computer Systems Technician	CLC	2 yrs (4 sems)	Jan, Sept	\$4,258	OSSD with Eng Gr. 12 (C/U); Math Gr. 11 (M/U) or Gr. 12 (C/U)	Computer networking technician, e-commerce and environment support, help desk technician, network administrator, technical support representative
<u>T186</u> Computer Programming	CLC	2 yrs (4 sems)	Jan, Sept	\$4,367	OSSD with Eng Gr. 12 (C/U); Math Gr. 11 (M/U) or Gr. 12 (C/U)	Software developer, web developer, database administrator, quality assurance analyst, technical support specialist
<u>T189</u> Computer Programming – Low Code Development	CLC	2 yrs (4 sems)	Jan, Sept	\$4,272	OSSD with Eng Gr. 12 (C/U); Math Gr. 11 (M/U) or Gr. 12 (C/U)	Low-code/application developer, systems/business process/quality assurance analyst, user experience (UX) designer, digital transformation specialist, automation engineer
<u>T191</u> Computer Systems Technician	Online	2 yrs (4 sems)	Jan, Sept	\$4,258	OSSD with Eng Gr. 12 (C/U); Math Gr. 11 (M/U) or Gr. 12 (C/U)	Computer networking technician, e-commerce and environment support, help desk technician, network administrator, technical support representative
Advanced Diploma						
<u>T147</u> Computer Systems Technology	CLC	3 yrs (6 sems)	Jan, Sept	\$4,101	OSSD with Eng Gr. 12 (C/U); Math Gr. 11 (M/U) or Gr. 12 (C/U)	IT support, system administrator, local area network support analyst, repair technician, technical support analyst, network administration, systems analysis
<u>T163</u> Game – Programming	WFC	3 yrs (6 sems)	Jan, Sept	\$4,120	OSSD with Eng Gr. 12 (C/U); Math Gr. 11 (M/U) or Gr. 12 (C/U)	Software/hardware/website developer, ISP and game portal development and maintenance, distribution middleware and tool provider, production servicer, content/IP owner
<u>T177</u> Computer Programming and Analysis	CLC	3 yrs (6 sems)	Jan, Sept	\$4,303	OSSD with Eng Gr. 12 (C/U); Math Gr. 11 (M/U) or Gr. 12 (C/U)	Database administration, systems analysis and design, consulting, web/mobile/full-stack application design and development, data architect (AI/ Machine Learning)
<u>T187</u> Computer Systems Technology	Online	3 yrs (6 sems)	Jan, Sept	\$4,101	OSSD with Eng Gr. 12 (C/U); Math Gr. 11 (M/U) or Gr. 12 (C/U)	Technical support, web developer, field technician (wireless/cellular service providers), system and network administrator/manager, cybersecurity analyst
<u>T193</u> Game – Programming	Online	3 yrs (6 sems)	Jan, Sept	\$4,120	OSSD with Eng Gr. 12 (C/U); Math Gr. 11 (M/U) or Gr. 12 (C/U)	Software/hardware/website developer, ISP and game portal development and maintenance, distribution middleware and tool provider, production servicer, content/IP owner
<u>T197</u> Computer Programming and Analysis	Online	3 yrs (6 sems)	Jan, Sept	\$4,303	OSSD with Eng Gr. 12 (C/U); Math Gr. 11 (M/U) or Gr. 12 (C/U)	Database administration, systems analysis and design, consulting, web/mobile/full-stack application design and development, data architect (AI/ Machine Learning)
Postgraduate						
<u>T402</u> Health Informatics	CLC	1 yr (3 sems)	Jan, May, Sept	\$8,005	2- or 3-year diploma in health sciences or IT/ computer science, Plus: min one year of work experience as health-care or IT professional (resume required); OR degree in health sciences, computer sciences, or related (no work exp. required). Graduates from other fields of study may be eligible. Please see program page for details.	Project/program coordinator, service desk analyst, data, product, or privacy analyst, clinical informatics coordinator, junior business analyst
<u>T405</u> Information Systems Business Analysis	CLC	1 yr (3 sems)	Jan, Sept	\$9,195	2- or 3-year diploma or bachelor's degree in computer science, commerce, engineering or related field. Plus: min one year of relevant work experience (resumé required).	Business analyst, systems analyst, informatics consultant, information systems quality assurance analyst, Management Information Systems (MIS) analyst
<u>T415</u> Embedded Systems Development	CLC	1 yr (2 sems)	Jan, Sept	\$6,732	Please see program page for details.	Embedded systems developer, IoT engineer, firmware developer, hardware/software integrator, robotics programmer, systems designer
<u>T426</u> Artificial Intelligence for Robotics	CLC	1 yr (2 sems)	Jan	\$8,681	2-year or 3-year diploma or degree in computer science, engineering, machine learning or a related field. Familiarity with Python strongly recommended.	Robotics engineer/technician, AI engineer, computer systems developer/programmer, software designer/engineer, software systems integration engineer
<u>T428</u> Digital Product Management	CLC	1 yr (2 sems)	Jan, Sept	\$4,620	2-year or 3-year diploma or degree in finance, healthcare, education, engineering, government.	Junior product manager, digital product manager, product analyst, project manager, business systems analyst
<u>T431</u> Applied A.I. Solutions Development	CLC	1 yr (3 sems)	Jan, May, Sept	\$8,731	2- year or 3-year diploma or degree in Information Technology, Computer Science or related. Recommended: Python programming skills. Applicants with diploma/degree in unrelated field will require departmental review (questionnaire, resumé, online interview) and Python programming skills.	data scientist/analyst, data management specialist, machine-learning engineer/technologist, artificial intelligence practitioner, full-stack data scientist

Program	Loc.	Length	Start	Tuition	Admission Requirements	Career Options
T433 Cyber Security	CLC	1 yr (3 sems)	Jan, Sept	\$12,761	2- or 3-year diploma or degree in Information Technology, Computer Sciences or related OR 2- or 3-year diploma or Degree in any field PLUS one year of related work experience (resume required)	Systems security analyst, informatics security analyst, network and security administrator, IT security analyst, cybersecurity engineer
T440 Mobile Application Development and Strategy	CLC	1 yr (3 sems)	Jan, Sept	\$6,034	2- or 3-year diploma or bachelor's degree in Information Technology, Computer Sciences or related.	Mobile developer, iOS developer, Android developer, front end developer, mobile engineer
T465 Cloud Computing Technologies	CLC	3 sems	Jan, May, Sept	\$5,011	2-year or 3-year diploma or degree in mathematics, business, computer science, economics, engineering or science.	Junior cloud computing engineer, data engineer, data scientist, cloud solutions engineer, cloud security developer
T475 Blockchain Development	CLC	1 yr (3 sems)	Sept	\$8,573	2- or 3-year diploma or bachelor's degree in Information Technology, Computer Science or related.	Blockchain developer/engineer, blockchain architect, smart contract developer, dApp developer, blockchain solution analyst or consultant

School of Engineering Technologies

Program	Loc.	Length	Start	Tuition	Admission Requirements	Career Options
Diploma						
T173 Mechanical Technician – CNC and Precision Machining	CLC	2 yrs (4 sems)	Sept	\$6,217	OSSD with Eng Gr. 12 (C/U); Math Gr. 11 (M/U) or Gr. 12 (C/U)	Aerospace, nuclear power, health care, transit and OEM automotive parts companies, construction, building, and electrical/electronics, tool and die, mould making, and general machining, CNC precision machining and toolmaking
Advanced Diploma						
T182 Electromechanical Engineering Technology – Power and Control	CLC	3 yrs (6 sems)	Jan, Sept	\$6,123	OSSD with Eng Gr. 12 (C/U); Math Gr. 11 (M/U) or Gr. 12 (C/U)	Energy, power and control systems, robotics and automation, manufacturing, processing, computer industries
Postgraduate						
T420 Smart Building Design and Operations	WFC	1 yr (2 sems)	Jan, Sept	\$4,522	Diploma, advanced diploma, degree (or equiv.) in comp sci., electromech., environmental eng., building science, sustainability, architecture, or other equiv. field. Applicants without the req'd education credential may be considered with a minimum of 2 yrs of relevant work experience.	Smart building control engineer, building automation engineer, systems integration architect, IoT system integration lead

Faculty of Business, Creative Industries, and Culinary Arts

School of Design

Program	Loc.	Length	Start	Tuition	Admission Requirements	Career Options
Certificate						
F111 Jewellery Essentials	CLC	1 yr (2 sems)	Sept	\$6,382	OSSD with Eng Gr. 12 (C/U)	Jewellery maker, jewellery designer, jewellery wholesaler, fashion jewellery manufacturer, jewellery retailer
F115 Industrial Power Sewing	CLC	1 sem (16 wks)	Jan	Funded	Due to the nature of this program and the evolving admissions requirements, please contact us for the most up-to-date information. Jeanine Larmour Student Success/Industry Liaison/Instructor jlarmour@georgebrown.ca ; Rosa Fracassa Director Fashion Exchange rfracass@georgebrown.ca	Please see program page for details.
F116 Apparel Fit Technician	FX	1 sem (16 wks)	Jan, July, May, Sept	Funded	Due to the nature of this program and the evolving admissions requirements, please contact us for the most up-to-date information. Jeanine Larmour Student Success/Industry Liaison/Instructor jlarmour@georgebrown.ca ; Rosa Fracassa Director Fashion Exchange rfracass@georgebrown.ca	Please see program page for details.
F117 Women in Fashion Technology	CLC	3 sems (10, 15, 15 wks)	Sept	Funded	Due to the nature of this program and the evolving admissions requirements, please contact us for the most up-to-date information. Jeanine Larmour Student Success/Industry Liaison/Instructor jlarmour@georgebrown.ca ; Rosa Fracassa Director Fashion Exchange rfracass@georgebrown.ca	Please see program page for details.

Program	Loc.	Length	Start	Tuition	Admission Requirements	Career Options
G108 Art and Design Foundation	WFC	1 yr (2 sems)	Jan, Sept	\$4,324	OSSD with Eng Gr. 12 (C/U). Recommended: at least one high school-level art class	Pathway to diplomas, advanced diplomas, and Honours Bachelor's programs in Graphic Design, Game Art, Interaction Design, Digital Experience Design, and OCAD University programs
Diploma						
F102 Fashion Management	CLC	2 yrs (4 sems)	Jan, Sept	\$4,812	OSSD with Eng Gr. 12 (C/U); Math Gr. 11 (C/M/U) or Gr. 12 (C/U)	Product developer/coordinator, buyer, production manager, merchandiser, retail planning and allocation
F112 Fashion Business Industry	CLC	2 yrs (4 sems)	Sept	\$4,812	OSSD with Eng Gr. 12 (C/U); Math Gr. 11 (C/M/U) or Gr. 12 (C/U)	Store manager, production planner, operations manager, visual merchandise coordinator, wholesale sales agent
F113 Fashion Techniques and Design	CLC	2 yrs (4 sems)	Jan, Sept	\$4,873	OSSD with Eng Gr. 12 (C/U); Math Gr. 11 (C/M/U) or Gr. 12 (C/U). Recommended: sewing experience.	Pattern drafter, garment constructor, technical designer, product developer, assistant designer, sample maker, technical illustrator, stylist, entrepreneur, pattern grader
Advanced Diploma						
G102 Graphic Design	WFC	3 yrs (6 sems)	Jan, Sept	\$4,285	OSSD with Eng Gr. 12 (C/U)	Art director, advertising copywriter, production designer, marketing coordinator, multimedia designer, package designer
G113 Interaction Design	WFC	3 yrs (6 sems)	Jan, Sept	\$8,648	OSSD with Eng Gr. 12 (C/U)	Interaction designer, mobile designer/developer, UX/UI designer/developer, web designer/developer, SEO/SEM specialist
G119 Game – Art	WFC	3 yrs (6 sems)	Jan, Sept	\$9,039	OSSD with Eng Gr. 12 (C/U)	2D/3D environment artist, 3D modeller, cinematic animator, conceptual artist, user interface artist
Degree						
G301 Honours Bachelor of Digital Experience Design	WFC	4 yrs (8 sems)	Sept	\$8,120	OSSD with 6 Gr. 12 (U/M) courses min average 60% incl. Eng Gr. 12 (U) min 65%; Math Gr. 11 (M/U) or Gr. 12 (U) min 60%. Mature students: please visit program page.	UX/UI designer/researcher, human interface designer, interaction designer, mobile designer, usability tester
G302 Honours Bachelor of Digital Experience Design	WFC	5 sems + 1 co-op work term	May	\$8,020	2-yr diploma or 3-yr advanced diploma in Interaction Design (G103/ 113) or related UI/ UX program; Min. GPA 3.2 (75%)	UX/UI designer/researcher, human interface designer, interaction designer, mobile designer, usability tester
G304 Honours Bachelor of Brand Design	WFC	4 yrs (8 sems)	Sept	\$7,910	OSSD with 6 Gr. 12 (U/M) courses min average 65% incl. Eng Gr. 12 (U) min 65%; Mature students: please visit program page.	Brand/digital designer, user interface designer, design strategist/researcher, content/community manager, communications officer/designer, raphic designer or illustrator, content writer or web producer, communications specialist, marketing researcher and business and strategy consultant
G305 Honours Bachelor of Brand Design	WFC	5 sems + 1 co-op work term	May	\$8,010	2-year diploma or 3-year advanced diploma in Graphic Design, min GPA of 3.2	Brand/digital designer, user interface designer, design strategist/researcher, content/community manager, communications officer/designer, raphic designer or illustrator, content writer or web producer, communications specialist, marketing researcher and business and strategy consultant

School of Management

Program	Loc.	Length	Start	Tuition	Admission Requirements	Career Options
Diploma						
B125 Business	SJC	2 yrs (4 sems)	Jan, Sept	\$3,936	OSSD with Eng Gr. 12 (C/U); Math Gr. 11 (C/M/U) or Gr. 12 (C/U)	Customer service representative, junior business analyst, procurement assistant, project planning assistant, scheduling coordinator
B134 Business – Human Resources	SJC	2 yrs (4 sems)	Jan, Sept	\$4,179	OSSD with Eng Gr. 12 (C/U); Math Gr. 11 (C/M/U) or Gr. 12 (C/U)	Recruitment and selection, compensation, benefits administration, human resources customer service, career planning and development
Advanced Diploma						
B122 Business Administration – Supply Chain and Operations Management	SJC	3 yrs (6 sems)	Sept	\$4,084	OSSD with Eng Gr. 12 (C/U); Math Gr. 11 (C/M/U) or Gr. 12 (C/U)	Procurement officer, customs analyst, forecasting and demand specialist, logistics analyst, supply chain specialist
B126 Business Administration – Project Management	SJC	3 yrs (6 sems)	Sept	\$4,084	OSSD with Eng Gr. 12 (C/U); Math Gr. 11 (C/M/U) or Gr. 12 (C/U)	Assistant project manager, junior project manager/ coordinator, project manager, project coordinator, business project manager
B144 Business Administration – Human Resources	SJC	3 yrs (6 sems)	Sept	\$4,203	OSSD with Eng Gr. 12 (C/U); Math Gr. 11 (C/M/U) or Gr. 12 (C/U)	Human resources coordinator, human resources assistant, human resources specialist, human resources administrator, recruitment coordinator

Program	Loc.	Length	Start	Tuition	Admission Requirements	
B145 Business Administration	SJC	3 yrs (6 sems)	Jan, Sept	\$4,108	OSSD with Eng Gr. 12 (C/U); Math Gr. 11 (C/M/U) or Gr. 12 (C/U)	Assistant manager, customer service representative, financial services representative, project manager, project coordinator
B154 Business Administration – Human Resources (with work experience)	SJC	3 yrs (6 sems)	Sept	\$4,203	OSSD with Eng Gr. 12 (C/U); Math Gr. 11 (C/M/U) or Gr. 12 (C/U)	Human resources coordinator, human resources assistant, human resources specialist, human resources administrator, recruitment coordinator
B155 Business Administration (with work experience)	SJC	3 yrs (6 sems)	Jan, Sept	\$4,108	OSSD with Eng Gr. 12 (C/U); Math Gr. 11 (C/M/U) or Gr. 12 (C/U)	Assistant manager, customer service representative, financial services representative, project manager, project coordinator
B156 Business Administration – Project Management (with work experience)	SJC	3 yrs (6 sems)	Sept	\$4,084	OSSD with Eng Gr. 12 (C/U); Math Gr. 11 (C/M/U) or Gr. 12 (C/U)	Assistant project manager, junior project manager/coordinator, project manager, project coordinator, business project manager
B162 Business Administration – Supply Chain and Operations Management (with work experience)	SJC	3 yrs (6 sems)	Sept	\$4,084	OSSD with Eng Gr. 12 (C/U); Math Gr. 11 (C/M/U) or Gr. 12 (C/U)	Supply chain specialist, logistics analyst, supply chain planning coordinator, operations/logistics coordinator, operations systems analyst
Postgraduate						
B408 Human Resources Management	SJC	12 months	Jan, Sept	\$4,948	Degree, advanced diploma, diploma, or equivalent	Human resources generalist, recruiter, learning and development coordinator, compensation analyst, human resources coordinator
B415 Project Management	SJC	8 months (2 sems)	May, Sept	\$5,044	Degree, advanced diploma, diploma, or equivalent	Junior project manager, team leader, project coordinator, project administrator, project analyst
B425 Project Management	Online	8 months (2 sems)	Jan, May, Sept	\$5,044	Degree, advanced diploma, diploma, or equivalent	Junior project manager, team leader, project coordinator, project administrator, project analyst
B428 Human Resources Management	Online	12 months	Jan, May, Sept	\$4,948	Degree, advanced diploma, diploma, or equivalent	Digital marketing specialist, marketing consultant, content marketing strategist, database marketing specialist, marketing analytics specialist
B430 People Analytics	SJC	1 yr (2 sems)	Jan, Sept	\$7,155	Degree, advanced diploma, diploma, or equivalent	HR data and reporting analyst or specialist, people analytics specialist, people analytics consultant, people analyst, HR generalist

School of Marketing and Financial Services

Program	Loc.	Length	Start	Tuition	Admission Requirements	Career Options
Diploma						
B103 Business – Accounting	SJC	2 yrs (4 sems)	Jan, Sept	\$4,108	OSSD with Eng Gr. 12 (C/U); Math Gr. 11 (C/M/U) or Gr. 12 (C/U)	Accounts analyst, accounts payable and receivable clerk, bookkeeper, business operations analyst, customer service representative
B120 Business – Marketing	SJC	2 yrs (4 sems)	Jan, Sept	\$4,274	OSSD with Eng Gr. 12 (C/U); Math Gr. 11 (C/M/U) or Gr. 12 (C/U)	Marketing assistant/coordinator, assistant sales manager, assistant event planner, digital marketing coordinator, media planning or media buying assistant
B133 Business – Finance	SJC	2 yrs (4 sems)	Jan, Sept	\$4,398	OSSD with Eng Gr. 12 (C/U); Math Gr. 11 (C/M/U) or Gr. 12 (C/U)	Financial advisor/planner, financial services representative, customer service representative, investment advisor, financial analyst
Advanced Diploma						
B107 Business Administration – Accounting	SJC	3 yrs (6 sems)	Jan, Sept	\$4,108	OSSD with Eng Gr. 12 (C/U); Math Gr. 11 (C/M/U) or Gr. 12 (C/U)	Audit associate, accounting analyst, accounts payable or receivables clerk, junior accountant, financial analyst
B108 Business Administration – Marketing	SJC	3 yrs (6 sems)	Jan, Sept	\$4,298	OSSD with Eng Gr. 12 (C/U); Math Gr. 11 (C/M/U) or Gr. 12 (C/U)	Marketing coordinator, account executive/manager, product manager, social media coordinator, digital marketing manager
B130 Business Administration – Finance	SJC	3 yrs (6 sems)	Jan, Sept	\$4,196	OSSD with Eng Gr. 12 (C/U); Math Gr. 11 (C/M/U) or Gr. 12 (C/U)	Financial advisor/planner, financial services representative, customer service representative, investment advisor, personal banking associate
B150 Business Administration – Finance (with work experience)	SJC	3 yrs (6 sems)	Jan, Sept	\$4,196	OSSD with Eng Gr. 12 (C/U); Math Gr. 11 (C/M/U) or Gr. 12 (C/U)	Financial advisor/planner, financial services representative, customer service representative, investment advisor, financial analyst
B157 Business Administration – Accounting (with work experience)	SJC	3 yrs (6 sems)	Jan, Sept	\$4,108	OSSD with Eng Gr. 12 (C/U); Math Gr. 11 (C/M/U) or Gr. 12 (C/U)	Accounting analyst, accounts payable or receivables clerk, junior accountant, financial analyst

School of Marketing and Financial Services continued

Program	Loc.	Length	Start	Tuition	Admission Requirements	Career Options
B158 Business Administration – Marketing (with work experience)	SJC	3 yrs (6 sems)	Jan, Sept	\$4,297	OSSD with Eng Gr. 12 (C/U); Math Gr. 11 (C/M/U) or Gr. 12 (C/U)	Marketing coordinator, account executive/manager, product manager, digital marketing manager, media planner or media buyer
Degree						
B302 Honours Bachelor of Commerce (Financial Services)	SJC	4 yrs (8 sems)	Sept	\$8,266	OSSD with 6 Gr. 12 (U/M) courses min average 65% incl. Eng Gr. 12 (U) min 60%; Math Gr. 12 (U) min 60%. Mature students: please visit program page.	Financial Planning: financial services representative, associate financial planner, personal banker, financial advisor, investment advisor Accounting: junior accountant, audit associate, staff accountant, tax associate, accounts payable/receivable coordinator, taxation accountant
B312 Honours Bachelor of Commerce (Digital Marketing)	SJC	4 yrs (8 sems)	Sept	\$7,640	OSSD with 6 Gr. 12 (U/M) courses min average 65% incl. Eng Gr. 12 (U) min 60%; Math Gr. 12 (U) min 60%. Mature students: please visit program page.	Marketing analyst, digital media specialist, social media manager, content manager, digital marketing specialist
Postgraduate						
B400 Sport and Event Marketing	SJC	12 months	Sept	\$4,236	Degree, advanced diploma, diploma, or equivalent	Account manager/executive, event coordinator, game operations coordinator, marketing coordinator, partnership and sponsorship, coordinator
B423 Marketing Management – Digital Media	Online	12 months	Jan, Sept	\$4,794	Degree, advanced diploma, diploma, or equivalent	Digital marketing assistant/manager, social media coordinator/manager, media planner, SEM specialist, SEO analyst
B433 Marketing Management – Digital Media	SJC	12 months	Jan, May, Sept	\$4,794	Degree, advanced diploma, diploma, or equivalent	Digital marketing assistant/manager, social media coordinator/manager, media planner, SEM specialist, SEO analyst

School of Media and Performing Arts

Program	Loc.	Length	Start	Tuition	Admission Requirements	Career Options
Certificate						
P101 Dance Performance Preparation	CLC	1 yr (2 sems)	Sept	\$5,645	OSSD with Eng Gr. 12 (C/U). Audition. Min 5 years training in jazz or modern dance and elementary level training in ballet (1–3 years).	Pursue further professional training
P106 Commercial Dance	CLC	1 yr (3 sems)	Sept	\$7,889	OSSD with Eng Gr. 12 (C/U). Audition. Min 5 years training in jazz dance.	Commercial dance, project-based dance, traditional festivals, teaching, choreographing, coaching, judging, sports and dance teams, cheerleading, film and television, continue professional development, circus performance, personal fitness, stage management, nutrition and physical therapies
P108 Theatre Arts – Preparation	YCPA	1 yr (2 sems)	Sept	\$4,765	OSSD with Eng Gr. 12 (C/U)	Audition for formal performing arts career-training
P111 Media Foundation	SJC	1 yr (2 sems)	Jan, Sept	\$5,436	OSSD with Eng Gr. 12 (C/U)	Pathway to diplomas and advanced diplomas in Video Design & Production, Acting for Media, Animation – 3D for Extended Reality, Film Production – Directing for Extended Reality, and Social Media Production – Culture-Based Creativity
P115 Social Media Foundations – Content Creation	SJC	1 yr (2 sems)	Jan	\$4,409	OSSD with Eng Gr. 12 (C/U)	Influencer, content creator, content planner, social media advertising consultant, social marketing consultant
Diploma						
P105 Dance Performance	CLC	2 yrs (4 sems)	Sept	\$5,710	OSSD with Eng Gr. 12 (C/U). Audition. Min 5-7 years training in classical ballet; pointe work; training in jazz and/or modern dance.	Commercial dance, project-based dance, traditional festivals, teaching, choreographing, coaching, judging, sports and dance teams, cheerleading, film and television, continue professional development, circus performance, personal fitness, stage management, nutrition and physical therapies
P107 Acting for Media	SJC	2 yrs (4 sems)	Jan, Sept	\$6,207	OSSD with Eng Gr. 12 (C/U). Questionnaire, audition.	Actor/actress, film dubber, voice-over actor, narrator, dramatic reader
P112 Video Design and Production	SJC	2 yrs (4 sems)	Jan, Sept	\$5,260	OSSD with Eng Gr. 12 (C/U)	Screenwriter, director/assistant director, editor/editorial assistant, producer/filmmaker, production assistant/manager
P113 Animation – 3D for Extended Reality	SJC	2 yrs (4 sems)	Jan	\$7,347	OSSD with Eng Gr. 12 (C/U). Recommended: experience with digital art/3D modelling/illustration	3D artist/animator/generalist, motion graphics/graphics artist, production assistant for extended reality, 3D rigger/modeller, cartoonist

Program	Loc.	Length	Start	Tuition	Admission Requirements	Career Options
P114 Film Production – Directing for Extended Reality	SJC	2 yrs (4 sems)	Sept	\$7,530	OSSD with Eng Gr. 12 (C/U)	Filmmaker/independent film director, assistant director, virtual production assistant, production/camera assistant, junior virtual engine operator
P116 Social Media Production – Culture-Based Creativity	SJC	2 yrs (4 sems)	Sept	\$7,430	OSSD with Eng Gr. 12 (C/U)	Influencer/content creator, advertising consultant, development officer, social media marketing consultant/coordinator/specialist, social media relations officer
Advanced Diploma						
P104 Theatre Arts – Performance	YCPA	3 yrs (6 sems)	Sept	\$5,375	OSSD with Eng Gr. 12 (C/U). Audition and interview.	Actor, director, stage manager, producer, theatre company performer, television performer, film performer

The Chef School

Program	Loc.	Length	Start	Tuition	Admission Requirements	Career Options
Certificate						
H101 Hospitality Services	SJC	1 yr (2 sems)	Jan, Sept	\$5,048	OSSD with Eng Gr. 12 (C/U)	Restaurant floor supervisor, hotel front office, food and beverage retailer, food retail supervisor
H128 Baking and Pastry Foundations	SJC	1 yr (2 sems)	Jan, Sept	\$6,606	OSSD with Eng Gr. 12 (C/U)	Assistant baker, cake decorator, chocolatier, food and research development assistant, pastry chef
H134 Culinary Skills	SJC	1 yr (2 sems)	Jan, May, Sept	\$7,834	OSSD with Eng Gr. 12 (C/U)	Chef/cook, dietary aide, food researcher, food service supervisor, line/prep cook
H600 Baker / Pâtissier Apprentice	SJC	2–5 yrs	Open	\$678	OSSD with Eng Gr. 12 (C/U); Math Gr. 11 (M/U) or Gr. 12 (C/U), or equivalent. Registered with MLITSD as an apprentice and have a registered employer sponsor.	Bakery assistant, baker/pâtissier, pastry chef, production baker, specialty baker
H601 Cook II – Apprentice – Basic	SJC	2–5 yrs	Sept	\$678	OSSD with Eng Gr. 12 (C/U); Math Gr. 11 (M/U) or Gr. 12 (C/U), or equivalent. Registered with MLITSD as an apprentice and have a registered employer sponsor.	Cook/line cook, prep cook, dietary aide
H604 Pâtissier Apprentice	SJC	2–5 yrs	Open	\$678	Successful completion of H600 and H606	Baker, pâtissier, pastry chef, specialty baker, confectioner
H606 Baker Apprentice Advanced	SJC	2–5 yrs	Open	\$678	Successful completion of H600	Baker, pâtissier, pastry chef, production baker, specialty baker, confectioner
H607 Cook Apprentice Advanced	SJC	2–5 yrs	Open	\$678	Successful completion of H601	Chef, cook/line cook, prep cook, dietary aide, food service supervisor
Diploma						
H100 Culinary Management	SJC	2 yrs (4 sems)	Jan, May, Sept	\$7,811	OSSD with Eng Gr. 12 (C/U)	Chef, cook, culinary manager/supervisor, restaurant owner/manager
H113 Baking and Pastry Arts Management	SJC	2 yrs (4 sems, non- consec.)	May, Sept	\$6,582	OSSD with Eng Gr. 12 (C/U)	Baker, pastry chef, cake decorator, production baker, baking/pâtisserie supervisor
H130 Tourism and Hospitality Management	SJC	2 yrs (4 sems)	Jan, Sept	\$5,113	OSSD with Eng Gr. 12 (C/U)	Assistant hotel manager, customer service representative, event/activity coordinator, food and beverage supervisor, reservation/travel agent
Degree						
H315 Honours Bachelor of Commerce (Culinary Management)	SJC	4 yrs (8 sems)	Sept	\$11,183	OSSD with 6 Gr. 12 (U/M) courses min average 65% incl. Eng Gr. 12 (U) min 60%; Math Gr. 12 (U) min 60%. Mature students: please visit program page.	Corporate/menu development chef, director of food service/food and beverage, corporate/regional chef, district/regional manager, food services logistics/consulting
H316 Honours Bachelor of Commerce (Culinary Management)	SJC	2 yrs (5 sems)	May	\$3,917	Culinary Management diploma with min GPA of 2.7. Please see program page for further details.	Corporate/menu development chef, director of food service/food and beverage, corporate/regional chef, district/regional manager, food services logistics/consulting
H317 Honours Bachelor of Food Studies	SJC	4 yrs (8 sems)	Sept	\$10,906	OSSD with 6 Gr. 12 (U/M) courses min average 65% incl. Eng Gr. 12 (U) min 65%. Mature students: please visit program page.	Food writer/blogger/journalist, chef/sous chef, food product developer, culinary consultant, public health promotions/specialist
H318 Honours Bachelor of Food Studies (Bridging)	SJC	5 sems	May	\$3,692	Culinary Management diploma with min GPA of 2.7. Please see program page for further details.	Food writer/blogger/journalist, chef/sous chef, food product developer, culinary consultant, public health promotions/specialist

Faculty of Community Services and Interdisciplinary Studies

School of Behavioural Science

Program	Loc.	Length	Start	Tuition	Admission Requirements	Career Options
Diploma						
C146 Behavioural Science Technician	WFC	2 yrs (4 sems)	Sept	\$3,928	OSSD with Eng Gr. 12 (C/U). Recommended courses: Math Gr. 11 (M/U) or Gr. 12 (C/U) AND Bio Gr. 11 (C/U) or Gr. 12 (U) OR Physics Gr. 11 (U) or Gr. 12 (C/U) OR Chem Gr. 11 (U) or Gr. 12 (C/U)	Instructor therapist, behaviour therapist/ technician, behaviour consultant, resource facilitator, employee of residential facilities, vocational agencies or other specialized agencies
C156 Behavioural Science Technician (Accelerated)	WFC	4 sems	Sept	\$5,688	3- or 4-year Bachelor of Arts	Behaviour therapist/consultant, community behaviour consultant, educational assistant, behaviour technician, community support worker
Degree						
S302 Honours Bachelor of Behaviour Analysis	WFC	4 yrs (8 sems)	Sept	\$7,427	OSSD with 6 Gr. 12 (U/M) courses min average 65% incl. Eng Gr. 12 (U) min 65%; Math Gr. 11 (M/U) or Gr. 12 (U) min 60%; Bio Gr. 11 (U) or Gr. 12 (U) min 60% OR Chem Gr. 11 (U) or Gr. 12 (U) min 60%, OR Physics Gr. 11 U or Gr. 12 (U) min 60%, OR Environmental Science Gr. 11 (M) min 60%. Mature students: please visit program page.	Autism spectrum disorders consultant, ABA therapist, behavioural support, behaviour technician/therapist/consultant/specialist, instructor/recreational therapist, residential/ vocational support worker
S303 Honours Bachelor of Behaviour Analysis (Year 3 Bridge)	WFC	5 sems + 14 wk Field Exp. term (unpaid)	May	\$10,638	2-year Behavioural Science Technician program with min GPA 3.0 OR Completion of two years of a Behavioural Science Technology advanced diploma with min GPA 3.0	Autism spectrum disorders consultant, ABA therapist, behavioural support, behaviour technician/therapist/consultant/specialist, instructor/recreational therapist, residential/ vocational support worker
Postgraduate						
C405 Autism and Behavioural Science (Postgraduate)	WFC	1 yr (2 sems)	Sept	\$3,935	Bachelor of Arts or Bachelor of Science (3- or 4-year) degree (major in psychology or related discipline recommended) OR a 2- or 3-year diploma in a human services discipline (major in psychology recommended).	ABA instructor in public agencies, group homes, schools and private family settings; graduates may also qualify for resource teacher, educational assistant, instructor therapist, program supervisor, applied behaviour analyst

School of Deaf and Deafblind Studies

Program	Loc.	Length	Start	Tuition	Admission Requirements	Career Options
Certificate						
C144 American Sign Language and Deaf Studies	Online	1 yr (2 sems)	Sept	\$4,314	OSSD with Eng Gr. 12 (C/U)	This program offers a variety of program pathways. Please see program page for details.
C158 Deafblind & Intervenor Studies	SJC	1 yr (2 sems)	Sept	\$4,783	OSSD with Eng Gr. 12 (C/U) min 60%	Intervenor, team leader, manager, supervisor, program co-ordinator, intervenor services co-ordinator
Degree						
C302 Honours Bachelor of Interpretation (American Sign Language – English)	SJC	4 yrs (8 sems) + 420 hour intern- ship (unpaid)	Sept	\$8,701	OSSD with 6 Gr. 12 (U/M) courses min average 65% incl. Eng Gr. 12 (U) min 65%; Math Gr. 11 (M/U) or Gr. 12 (U), OR Science Gr. 11 (U) or Gr. 12 (M/U) Supplemental requirements: Basic ASL proficiency level, info session, questionnaire, in-person screening, letter of reference. Please visit program page for details.	Deaf interpreter, ASL-English interpreter, conference, community, designated interpreter, ASL consultant, translator

School of Early Childhood

Program	Loc.	Length	Start	Tuition	Admission Requirements	Career Options
Diploma						
C100 Early Childhood Education	TMU	2 yrs (4 sems) 16 cons. months	Jan May, Sept	\$4,212	OSSD with Eng Gr. 12 (C/U) plus any 3 Gr. 12 (C/U/M) or Grade 11 (C/U/M) credits (some exceptions).	Child care and early years programs, full-day and integrated kindergarten, in-home care, family resource programs, special education settings, therapeutic nursery programs

Program	Loc.	Length	Start	Tuition	Admission Requirements	Career Options
C130 Early Childhood Education (Fast-Track)	TMU	10 months + 2 wk orientation	Sept	\$4,060	Diploma or degree in related field OR one year completed of an ECE credential, plus experience working with children (resumé required). Plus: two-week orientation course in August (fee applies)	Child care and early years programs, full-day and integrated kindergarten, in-home care, family resource programs, special education settings, therapeutic nursery programs
C150 Early Childhood Education (Online)	Online	16 cons. months	Jan, Sept	\$4,213	OSSD with Eng Gr. 12 (C/U) plus any 3 Gr. 12 (C/U/M) or Grade 11 (C/U/M) credits (some exceptions).	Child care and early years programs, full-day and integrated kindergarten, in-home care, family resource programs, special education settings, therapeutic nursery programs
C160 Early Childhood Education (Accelerated)	TMU	16 cons. months	Sept	\$6,065	OSSD with Eng Gr. 12 (C/U) plus any 3 Gr. 12 (C/U/M) or Grade 11 (C/U/M) credits (some exceptions).	Child care and early years programs, full-day and integrated kindergarten, in-home care, family resource programs, special education settings, therapeutic nursery programs
Consecutive Diploma and Degree						
C118 Early Childhood Education	TMU	4 yrs (8 sems)	Sept	\$4,212	OSSD with 6 Gr. 12 (U/M) courses min average 65% incl. Eng Gr. 12 (U) min 60%; Math Gr. 11 (M/U) or Gr. 12 (U), OR Science Gr. 11 (M/U) or Gr. 12 (M/U) Mature students: please visit program page.	Child care and early years programs, pediatric playrooms, full-day and integrated kindergarten, family resource programs, special education/therapeutic nursery programs
Degree						
C305 Bachelor of Early Childhood Education – Honours (Degree Completion)	TMU	2 yrs (4 sems)	Sept	\$7,510	ECE diploma (2-years) with min GPA 2.5. OR ECE diploma with min 3 years work experience in ECE (resumé and reference letters required)	Early childhood program supervisor, director, curriculum leader

School of ESL and Immigrant Education

Program	Loc.	Length	Start	Tuition	Admission Requirements	Program Pathways
Certificate						
R901 English as a Second Language (ESL)	SJC	Within 3 consec. acad. yrs	Jan, Mar, May, July, Sept, Nov	See prog. page	Apply to this program if you are interested in further developing your verbal, listening, and written communication English language skills for both personal and professional use. As this is an advanced-level certificate, you must complete ESL 9068 (ESL IIIB ADVANCED) or have an equiv. English placement test result prior to taking the core courses in this certificate. Prior to enrolling in any of the elective courses, you must complete ESL 9067 (ESL IIIA LOW ADVANCED) or have the equiv. English placement test.	Develop your English language skills for personal, professional and academic purposes
R902 English for Professional Success (EPS)	SJC	Within 3 consec. acad. yrs	Jan, May, Sept	See prog. page	You must complete ESL 9068 (ESL IIIB Advanced) or have an equiv. English placement test result prior to taking the core courses in this certificate. Prior to enrolling in any of the elective courses, you must complete ESL 9067 (ESL IIIA Low Advanced) or have the equivalent English placement test. B (73 per cent) or better to successfully complete each course.	For working professionals looking to build confidence with personal and professional cross-cultural communications. Please see program page for details.
R903 Continuing Education ESL Pathway to George Brown Polytechnic Certificates and Diplomas	SJC	Within 3 consec. acad. yrs	Jan, May, Sept	See prog. page	The Continuing Education ESL Pathway to George Brown Polytechnic Certificates and Diplomas is comprised of four mandatory courses. Entry to each course requires the completion of a specific prerequisite course or the equivalent English placement test result.	Meet the minimum English Language admissions requirement for any of George Brown's full-time Ontario College Certificate or Diploma programs. Please see program page for details.

School of Liberal Arts and Sciences

Program	Loc.	Length	Start	Tuition	Admission Requirements	Program Pathways
Certificate						
R101 General Arts and Science	CLC	2 yrs (4 sems)	Jan, Sept	\$3,963	OSSD with Eng Gr. 12 (C/U)	This program offers a variety of program pathways. Please see program page for details.
Diploma						
R104 General Arts and Science – One-Year	CLC	1 yr (2 sems)	Jan, Sept	\$3,987	OSSD with Eng Gr. 12 (C/U)	This program offers a variety of program pathways. Please see program page for details.

School of Social and Community Services

Program	Loc.	Length	Start	Tuition	Admission Requirements	Career Options
Diploma						
<u>C101</u> Community Worker	SJC	2 yrs (4 sems)	Sept	\$3,930	OSSD with Eng Gr. 12 (C/U)	Shelter supervisors, community support worker, international development workers, immigration and refugee settlement, and community development, health and community advocacy in food justice, Indigenous rights and climate justice
<u>C119</u> Social Service Worker	SJC	2 yrs (4 sems)	Sept	\$3,930	OSSD with Eng Gr. 12 (C/U) min 60%	Addiction counsellor, autism support assistant, social service worker, client support worker, community housing worker
<u>C131</u> Community Worker (Accelerated)	SJC	5 wks, 8 months (3 sems) full-time	May	\$4,840	Diploma or degree plus completion of a five-week program in May	Shelter supervisors, community support worker, international development workers, immigration and refugee settlement, and community development, health and community advocacy in food justice, Indigenous rights and climate justice
<u>C135</u> Social Service Worker (Accelerated)	SJC	6 wks, 8 months (3 sems)	May	\$5,155	Diploma or degree related to the field of social or community work. Plus: a six-week prep module in May is required prior to program start.	Case manager, intake worker, residential case worker, family/community support worker, outreach worker
Advanced Diploma						
<u>C133</u> Child and Youth Care	SJC	3 yrs (6 sems)	Sept	\$3,960	OSSD with Eng Gr. 12 (C/U) min 55%. Volunteer experience with children and youth recommended.	Child and youth care worker, residential youth support worker, foster care resource worker, youth counsellor, outreach worker
<u>C153</u> Child and Youth Care (Accelerated)	SJC	12 cons. months	May	\$5,700	2-year or 3-year diploma, or degree	Child and youth care worker, residential youth support worker, foster care resource worker, youth counsellor, outreach worker
Postgraduate						
<u>C416</u> Career Development Practitioner	Online	1 yr (3 sems)	Jan	\$5,421	Diploma, advanced diploma, or Degree in any field OR a combination or partial postsecondary education and/ or a minimum or three years, full-time, relevant experience.	Career consultant, job developer/employment placement specialist, career education advisor, outreach specialist, employee assistance counsellor

School of Work and College Preparation

Program	Loc.	Length	Start	Tuition	Admission Requirements	Program Pathways
Certificate						
<u>A101</u> College Vocational	SJC	1 year (2 sems)	Sept	\$3,799	OSSD OR OSSC OR Mature Student Status (19 or older)	Enrol in specialized job training programs and additional college programs, continue to work with PTP employment counsellors and job developers
<u>A106</u> Construction Craft Worker Foundations	CLC	18 wks	April	Free	OSSD, mental health and/or addiction history, mature student status. Plus: application, academic assessment, skills assessment and interview.	Construction labourer, carpentry helper, masonry helper, cement-finishing helper, demolition worker
<u>A107</u> Transitions to Post-Secondary Education	SJC	12 months (3 sems)	Jan, April, Sept	Free	English reading/writing skills, self-identified experience of mental health/or addictions barriers, mature student status.	Qualify for a wide range of employment and educational opportunities. Please see program page for details.
<u>A108</u> Pre-Health Sciences Pathway to Advanced Diplomas and Degrees	SJC	1 yr (2 sems)	Jan, May, Sept	\$4,054	OSSD with Eng Gr.12 (C/U) min 65%; Math Gr.12 (C/U) min 65%. Sr. level biology, chemistry or physics recommended	This program leads to a variety of program pathways. Please see program page for details.
<u>A109</u> Pre-Health Sciences Pathway to Certificates and Diplomas	SJC	1 yr (2 sems)	Jan, May, Sept	\$3,965	OSSD with Eng Gr. 12 (C/U)	This program leads to a variety of program pathways. Please see program page for details.
<u>A110</u> Culinary Skills (Preparatory Training)	SJC	2 sems	Sept	Free	OSSD, mental health and/or addiction history, mature student status. Plus: application, academic assessment, skills assessment and interview.	Kitchen prep, prep cook, line cook
<u>A113</u> Human Services Foundations	SJC	1 yr (2 sems)	Jan, Sept	\$3,955	OSSD with Eng Gr. 12 (C/U)	Graduates are eligible for further study or entry-level work in human services foundations. Please see program page for details.
<u>A751</u> Academic Upgrading	SJC	1-3 sems ¹	Jan, May, Sept	Funded	Ontario resident, fluency in English, mature student status. Plus, an admissions assessment.	Earn Academic and Career Entrance (ACE), grade 12 "C" equivalent credits, to apply for any program offered at an Ontario Community College
<u>A752</u> Academic Upgrading Program for Deaf and Hard of Hearing Adults	SJC	1-5 sems ¹	Sept	Funded	Admission testing and interview, demonstrated proficiency in American Sign Language (ASL) and English.	Success in further education, training, or employment with upgraded English, ASL, and math. See program page for details.

¹ Must complete the program within three consecutive academic years.

Faculty of Health Sciences

Sally Horsfall Eaton School of Nursing

Program	Loc.	Length	Start	Tuition	Admission Requirements	Career Options
Certificate						
C112 Personal Support Worker	WFC	2 sems	Jan, Sept	\$4,020	OSSD with Eng Gr. 12 (C/U)	Long-term care and ambulatory facilities, residential and supportive housing, community support agencies, acute medical and palliative care
S119 Personal Support Worker Pathway to Practical Nursing	WFC	14 wks (1 sem)	Jan, May, Sept	\$2,207	Ontario Personal Support Worker (PSW) graduate (Ontario college certificate from a CAAT college) or from accredited private career college or institution from 2014 onward with min GPA 3.0. AND Eng Gr. 12 (C/U) with min 65% and Math Gr. 11 (M/U) or Gr. 12 (C/U) with min 65%	Eligible to apply to Practical Nursing (S121). See site for conditions and details.
Diploma						
S121 Practical Nursing	WFC	2 yrs (4 sems)	Jan, May, Sept	\$4,942	OSSD with Eng Gr. 12 (C/U) min 70%; Math Gr. 11 (M/U) or Gr. 12 (C/U) min 70%; Bio Gr. 11 (C/U) or Gr. 12 (U) min 70%; Chem Gr. 11 (U) or Gr. 12 (C/U) min 70%	Acute and community care hospitals, long-term care, rehabilitation, other health-care facilities, organizations and agencies that require nursing knowledge and expertise
Postgraduate						
S402 Registered Nurse – Critical Care Nursing (Postgraduate)	WFC	1 sem	Jan, Sept	\$2,432	RN, Certificate of Competence, College of Nurses of Ontario without practice restrictions; BCLS, HCP Level; one year of acute care nursing experience in Ont. Only sponsored applicants are eligible.	Medical-surgical, neuro-surgical, trauma, coronary and cardiovascular critical care units
S404 Registered Nurse – Perinatal Intensive Care Nursing (Postgraduate)	WFC	15 wks (1 sem)	Jan, Sept	\$2,470	Registered Nurse; Certificate of Competence, College of Nurses of Ontario without practice restrictions; BCLS; HCP Level; secondary intake form; resumé; NRP cert.	Level II and Level III neonatal intensive care units
S414 Registered Nurse – Operating Room Perioperative Nursing (Postgraduate)	WFC	1 sem	Jan, May, Sept	\$2,446	RN, Certificate of Competence, College of Nurses of Ontario without practice restrictions; BCLS; HCP level; resumé; phone interview. Two years of surgical nursing experience in a hospital setting recommended (no operating room experience necessary).	Perioperative team at a beginner level
S425 Registered Practical Nursing – Perioperative (Postgraduate)	WFC	1 sem (14 wks)	Sept	\$2,446	RPN; Certificate of Competence, College of Nurses of Ontario, without practice restrictions; BCLS; HCP level; resumé. Recommended one year of medical surgical experience (not required).	Perioperative team at a beginner level
S442 RPN Bridge to BScN (Postgraduate)	WFC	2 sems	Sept	\$7,219	Registered practical nurse (RPN) in good standing with the CNO without practice restrictions. Graduation from a 2-year college Practical Nursing (PN) diploma program in Ontario with min GPA 75% and no failed or repeated courses. See program page for details.	Eligible to apply to Trent University's post-bridge nursing degree program. See site for details.
Degree						
S318 Bachelor of Science in Nursing (Honours)	WFC	4 yrs (8 sems)	Sept	\$7,735	OSSD with 6 Gr. 12 (U/M) courses min avg. 75% incl. Eng 4 (U) min 75%; Math Gr. 12 (U) min 75%; Bio Gr 12 (U) min 75%; Chem Gr. 12 (U) min 75%. Min 60% in additional two courses. Mature applicants must meet all requirements and minimum grades. Full academic disclosure of previous postsecondary education required. Applicants with prior nursing studies must have min CGPA of 2.33 and be considered in good standing.	Employment in health care settings, including acute care hospitals, long-term care facilities, mental health and community-based outreach programs; or pursue postgraduate advanced education and certification for specialty areas in nursing such as critical care, perioperative surgical nursing, and neonatal intensive care

School of Allied Health

Program	Loc.	Length	Start	Tuition	Admission Requirements	Career Options
Diploma						
<u>S126</u> Occupational Therapy Assistant and Physical Therapy Assistant	WFC	2 yrs (4 sems)	Jan	\$5,950	OSSD with Eng. Grade 12 (C/U); Bio Gr. 11 (C/U) or Gr. 12 (U). Kinesiology accepted in lieu of biology	Occupational Therapist Assistant and Physiotherapist Assistant in acute care and complex continuing care, mental health facilities, community agencies, long-term care facilities, rehabilitation centers, vocational rehabilitation programs, sports clinics, children's treatment centers, schools, private industry
<u>C139</u> Health Information Management	WFC	2 yrs (4 sems)	Sept	\$4,085	OSSD with Eng Gr. 12 (C/U) min 55%; Math Gr. 11 (M/U) or Gr. 12 (C/U) min 55%; Bio Gr. 11 (C/U) or Gr. 12 (U) OR Physics Gr. 11 (U) or Gr. 12 (C/U) OR Chem Gr. 11 (U) or Gr. 12 (C/U) min 55%	Transition health records from paper to electronic; develop, implement and maintain health information systems, protect and control patient information, evaluate documentation standards, participate in clinical research and other administrative duties.
<u>S102</u> Orthotic/Prosthetic Technician	SHS	2 yrs (4 sems)	Sept	\$6,472	OSSD with Eng Gr. 12 (C/U); Math Gr. 11 (M/U) or Gr. 12 (C/U); Bio Gr. 11 (C/U) or Gr. 12 (U); Plus: Online entrance exam, video interview and manual dexterity test	Make prostheses and orthoses and work in a variety of settings including hospitals, rehabilitation centres and private facilities
<u>S135</u> Office Administration – Health Services	WFC	2 yrs (4 sems)	Jan, Sept	\$4,087	OSSD with Eng Gr. 12 (C/U). Recommended: basic keyboarding and computer skills	Work in health services settings including doctors' offices, clinics and hospitals, pharmaceutical companies, government agencies and medical organizations
Advanced Diploma						
<u>S117</u> Hearing Instrument Specialist	WFC	3 yrs (6 sems)	Sept	\$5,083	OSSD with Eng Gr. 12 (C/U); Bio Gr. 11 (C/U) or Gr. 12 (U) min 60%	Work in a variety of places including clinical settings, manufacturing settings, training roles, or self-employment
Postgraduate						
<u>S407</u> Clinical Methods in Orthotics/Prosthetics	SHS	2 yrs (4 sems)	Sept	\$6,104	4-yr. Bachelor of Science degree (degree in Engineering or Kinesiology considered). Courses in Anatomy, Biomechanics and Gait, Human Physiology and Pathology, and Rehabilitation Sciences preferred. Plus: online entrance exam; 2 reference letters; video interview. See program page for details.	Entry-level orthotist or prosthetist at hospitals, rehabilitation centres and private facilities throughout Canada

School of Dental Health

Program	Loc.	Length	Start	Tuition	Admission Requirements	Career Options
Certificate						
<u>S113</u> Dental Assisting (Levels I and II)	WFC	1 yr (2 sems)	Sept	\$7,055	OSSD with Eng Gr. 12 (C/U) min 60%; Math Gr. 11 (M/U) or Gr. 12 (C/U) min 60%; Bio Gr. 11 (C/U) or Gr. 12 (U) min 60%	General and specialty private dental practices, public health and hospital dental clinics, dental industry, armed forces, insurance companies
<u>S115</u> Dental Office Administration	WFC	1 yr (2 sems)	Sept	\$4,024	OSSD with Eng Gr. 12 (C/U). Recommended: basic keyboarding and computer skills	Dental office administrators within dental practices, specialty groups practices and dental insurance companies
Advanced Diploma						
<u>S100</u> Dental Technology	WFC	3 yrs (6 sems)	Sept	\$10,360	OSSD with Eng Gr. 12 (C/U) min 70%; Math Gr. 11 (M/U) or Gr. 12 (C/U) min 60%; Bio Gr. 11 (C/U) or Gr. 12 (U) min 70%; Chem Gr. 11 (U) or Gr. 12 (C/U) min 60% OR Physics Gr. 11 (U) or Gr. 12 (C/U) min 60%	Dental lab associate, dental supply company sales representative. Additional options available. See program page for details.
<u>S101</u> Denturism	WFC	3 yrs (6 sems)	Jan, Sept	\$20,400	OSSD with Eng Gr. 12 (C/U) min 70%; Math Gr. 11 (M/U) or Gr. 12 (C/U) min 60%; Bio Gr. 11 (C/U) or Gr. 12 (U) min 70%; Chem Gr. 11 (U) or Gr. 12 (C/U) min 60% OR Physics Gr. 11 (U) or Gr. 12 (C/U) min 60%	Private dental practice, community health settings and hospitals, teaching institutions, research and innovation facilities, denturist clinics, dental labs and the dental industry
<u>S134</u> Dental Hygiene	WFC	3 yrs (6 sems)	Sept	\$18,217	OSSD with Eng Gr. 12 (C/U) min 75%; Math Gr. 11 (M/U) or Gr. 12 (C/U) min 75%; Bio Gr. 11 (C/U) or Gr. 12 (U) min 75%; Chem Gr. 11 (U) or Gr. 12 (C/U) min 75% OR Physics Gr. 11 (U) or Gr. 12 (C/U) min 75%. Note: additional post-secondary education in health sciences will be considered during admission process. Check program page for further details.	Private dental and dental hygiene practices, hospitals and community health services, research and teaching institutions, collective living centres and the dental industry.

Program	Loc.	Length	Start	Tuition	Admission Requirements	Career Options
Degree						
S305 Honours Bachelor of Science (Dental Hygiene)	WFC	3 sems	Jan, May, Sept	\$11,283	3-yr Ontario College Advanced Diploma in Dental Hygiene from an accredited publicly-funded program with min 3.0 GPA; OR 2-yr Diploma in Dental Hygiene from an accredited publicly-funded program with min 3.0 GPA, AND min 8 yrs clinical experience in dental hygiene, AND a Research Methods course at the post-sec. level; OR 1-yr dental assisting plus 1-yr Ontario college Dental Hygiene diploma from an accredited, publicly-funded program with min GPA of 3.0, AND min 8 yrs of consistent clinical experience in Dental Hygiene, and relevant postsecondary academic prep, AND a Research Methods course at the post-sec. level; OR Dental Hygiene diploma from an Ontario, accredited private college with min GPA 3.0, AND min 8 yrs of consistent clinical experience in Dental Hygiene, and relevant post-sec. academic prep, AND a Research Methods course at the post-secondary level. Please visit program page for full requirements and the Equal Consideration Date.	Oral public health care, policy development, health-care advocacy, education, sales industry

Student Housing

The George Student Residence

Walking distance from two of our campuses, The George offers furnished two-bedroom suites with kitchenettes, high-speed internet, group study areas, a community kitchen, laundry facilities, lounge, game areas, and a patio with barbecues.

Academic year term (September to April) estimated rate: **\$11,000**. Residence fees include all utilities, phone (with local calling), cable television, internet access, and a fully furnished suite.



georgebrown.ca/residence



Through an affiliated partnership, George Brown Polytechnic students who apply for residence may also be eligible for placement at Parkside Student Residence, a well-established housing option in downtown Toronto.

Enjoy contemporary, fully furnished suites, an exceptional dining program, and a dynamic student community designed to enhance your academic journey at George Brown.

How to Apply

In Ontario, domestic students apply to all polytechnics and colleges through ontariocolleges.ca. You can apply for up to five programs through one application. Most programs at George Brown are eligible for early offers, which means depending on your date of application, you may hear back as early as **November 1**. For highly competitive programs, make sure you apply by **February 1, 2026**, for equal consideration for an available space.



1. Find the program that's right for you

Research programs online through our Program Finder tool. You can compare programs side by side using our Program Comparison feature.

Consider attending an upcoming open house or information session to meet faculty and staff, and have your questions answered.



2. Complete the application process at Ontario Colleges

Apply online for up to 5 programs (up to 3 programs at one institution) and send in your academic documents if required. For high school applicants, grades will be transmitted electronically by your school.



3. Track your application status online

Applicants can track their application status at stuvview.georgebrown.ca.



4. Complete any additional application requirements and accept your offer

In some cases, our programs require an assessment, interview, audition or questionnaire. We will let you know if that's required for your program.



georgebrown.ca/apply



Financial Assistance

At George Brown, we believe that finances shouldn't be a barrier to receiving an education.

We have resources available to help you pay for your education, and our Financial Aid team is here to provide support. Connect with us at georgebrown.ca/financialaid

Options can include:

Ontario Student Assistance Program (OSAP)

OSAP provides financial assistance through loans (money you pay back) and grants (money you don't have to pay back).

Awards, Scholarships and Bursaries

Our awards program is designed to help students in financial need and those who do well academically. There are many awards offered through George Brown and external partners.

Emergency Funding

Sometimes things come up that we don't plan for. When this happens, emergency funding may be available. Contact Financial Aid (georgebrown.ca/financialaid) to access the application.

Work Study Program

This program provides students with on-campus job opportunities for up to 15 hours a week.

Canada Learning Bond

Are you an applicant or current student with a Registered Education Savings Plan (RESP)? You may be eligible for the Canadian Learning Bond.

External Loans

If government funding isn't for you, there are other options that might fit you.

Tuition Payment Plans

Payment plans are available to new and returning domestic students and returning international students. Plans allow students to pay their semester tuition in three instalments.



Our Campuses and Locations

Our campuses are integrated with Toronto's downtown, providing students with unparalleled access to work-integrated learning opportunities, including internships, co-op placements, and networking experiences with industry leaders.

1 St. James Campus

Located in the heart of downtown Toronto, the St. James Campus serves as George Brown Polytechnic's flagship location and is home to business, community and social work, hospitality and culinary, media, liberal arts, and academic upgrading programs. Spread over six buildings, this bustling urban campus puts students at the centre of Canada's largest city, where the energy of commerce, culture, and innovation converge.

2 Casa Loma Campus

This campus' three buildings specialize in construction and trades programs, computer technology, fashion, dance, and jewellery, offering students hands-on learning environments that mirror real-world industry settings. The campus combines the charm of a residential neighbourhood with the learning spaces required for technical and real-world learning.

3 Waterfront Campus

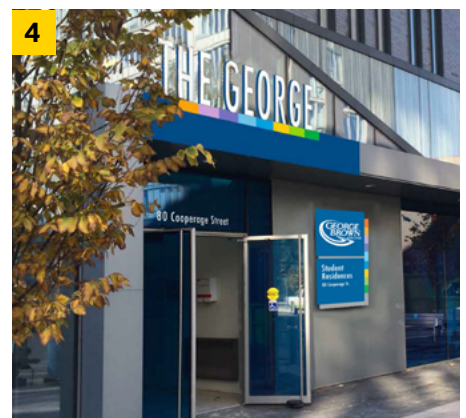
The stunning Waterfront Campus reflects George Brown's dedication to education and innovation through cutting-edge labs, classrooms, and learning spaces. Comprising three buildings, it includes the Faculty of Health Sciences and the Schools of Design and Architectural Studies.

4 The George Student Residence

A short walk from both the St. James and Waterfront campuses, The George provides students with a home-away-from-home experience in one of Toronto's most dynamic neighbourhoods. This modern residence facility offers comfortable, safe, and convenient living spaces designed specifically for the student lifestyle, fostering community connections while maintaining privacy and independence.

Satellite Locations

We have other locations in Toronto where students attend classes: early childhood programs at Toronto Metropolitan University; prosthetic and orthotic programs at Sunnybrook Health Sciences Centre; theatre and performing arts at the Young Centre for the Performing Arts; and fashion certificate programs at the Fashion Exchange.



Learn more about our campuses at georgebrown.ca/campuses

Map



Casa Loma Campus
160 Kendal Ave.

St. James Campus
200 King St. E.

Waterfront Campus
51 Dockside Dr.

FX (Fashion Exchange)
63 Regent Park Blvd.

TMU (Toronto Metropolitan University)
99 Gerrard St. E.

The George Student Residence
80 Cooperage St.
Sunnybrook Health Sciences Centre
2075 Bayview Ave.

Young Centre for the Performing Arts
50 Tankhouse Lane



Win \$5000 towards your tuition at George Brown Polytechnic!



Sign up to receive more information about George Brown's programs and upcoming information sessions for your chance to win \$5,000 towards tuition!

georgebrown.ca/contest



Follow Us

-  [gbpolytech](#)
-  [gbpolytech](#)
-  [gbpolytech](#)

-  [gbpolytech](#)
-  [gbpolytech](#)
-  [gbcollege](#)

**GEORGE
BROWN**

POLYTECHNIC

georgebrown.ca